

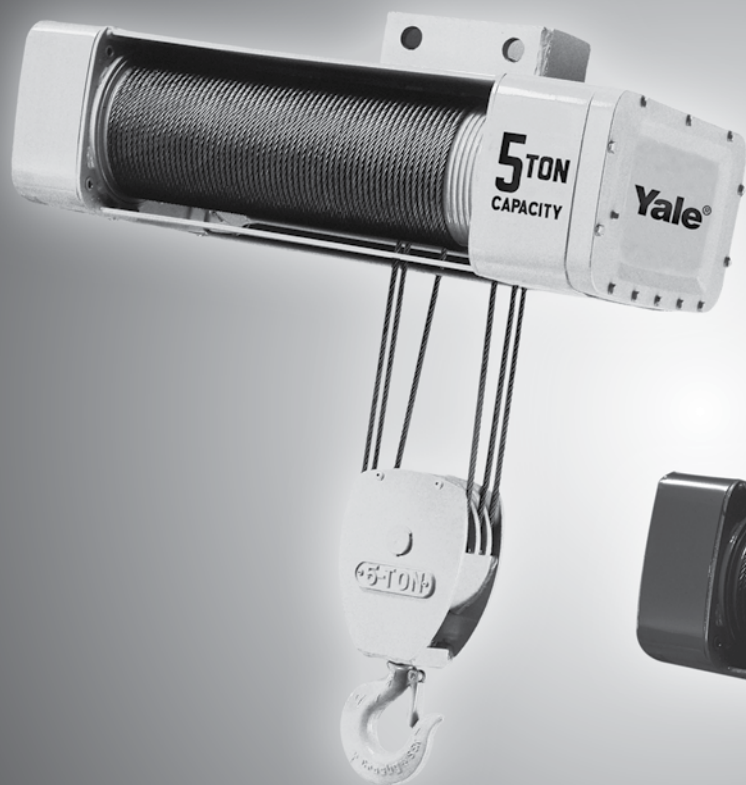
Yale[®]
Y80 SERIES

SHAW-BOX[®]
800 SERIES

Drawings and Specifications Book

Monorail Hoists

- Electric
- Air
- Explosion Proof



- Lug Mount
- Hook Mount
- Foot Mount

This catalog contains reference dimensions and specifications for the Shaw-Box 800 Series and the Yale Y80 Series Wire Rope Hoists. If a desired hoist or hoist option is not found in this booklet, please consult your CMCO Sales Representative.

Note: This booklet contains reference dimensions and specifications only for hoists with motor driven trolleys. For drawings of hoists that are lug mounted or with hand-push or hand-gearred trolleys, configure the hoist in Compass.

Index

Subject	Page No.
Yale Y80/Shaw-Box 800 Series Electric Hoists	
Single Reeved Standard Specifications & Drawing	
Standard Specifications	3
1/2-ton - 25' lift	4
1/2-ton - 50' lift	5
1-ton - 25' lift.....	6
1-ton - 50' lift.....	7
2-ton - 20 & 40' lift	8
3-ton - 30' lift.....	9
3-ton - 45' lift.....	10
5-ton - 20' lift.....	11
5-ton - 30' lift.....	12
Double Reeved Standard Specifications & Drawings	
Standard Specifications	13
1/2-ton - 18' lift	14
1/2-ton - 34' lift	15
1/2-ton - 47' lift	16
1-ton - 18' lift.....	17
1-ton - 34' lift.....	18
1-ton - 47' lift.....	19
2-ton - 14' lift.....	20
2-ton - 25' lift.....	21
2-ton - 36' lift.....	22
Yale Y80/Shaw-Box 800 Series Air Hoists	
Single Reeved Standard Specifications & Drawings	
Standard Specifications	23
1-ton - 25' lift.....	24
1-ton - 50' lift.....	25
2-ton - 20' lift.....	26
2-ton - 40' lift.....	27
3-ton - 30' lift.....	28
3-ton - 45' lift.....	29
5-ton - 20' lift.....	30
5-ton - 30' lift.....	31
Double Reeved Standard Specifications & Drawings	
Standard Specifications	32
1-ton - 18' lift.....	33
1-ton - 34' lift.....	34
2-ton - 14' lift.....	35
2-ton - 25' lift.....	36

Standard Features	Dimensions & Specifications	ELECTRIC WIRE ROPE	Y80 - 800 Series		
--------------------------	--	---------------------------	-------------------------	--	--

Single Reeved Electric Hoists with Motor Driven Trolleys

Feature	1/2 Ton	1 Ton	2 Ton	3 Ton	5 Ton
Service Class	H-4	H-4	H-4	H-4	H-4
Reeved	2 PS - 1/4"	2 PS - 1/4"	2 PS - 5/16"	4 PS - 5/16"	6 PS - 5/16"
Hoist Gearing	Triple reduction Helical/Spur	Triple reduction Helical/Spur	Triple reduction Helical/Spur	Triple reduction Helical/Spur	Triple reduction Helical/Spur
Hook Assembly	Bearing Thrust Washer 360 degree rotate	Bearing Thrust Washer 360 degree rotate	Bearing Thrust Washer 360 degree rotate	Bearing-mounted 360 degree rotate	Bearing-mounted 360 degree rotate
Hoist Motor	30-minute rated TENV	30-minute rated TENV	30-minute rated TENV	30-minute rated TENV	30-minute rated TENV
Hoist Motor Brake (AC)	100% Torque disc	100% Torque disc	100% Torque disc	100% Torque disc	100% Torque disc
Load Brake	Weston type Roller Ratchet	Weston type Roller Ratchet	Weston type Roller Ratchet	Weston type Roller Ratchet	Weston type Roller Ratchet
Hoist Control	1-speed	1-speed	1-speed	1-speed	1-speed
Control Circuit voltage	115 Volts	115 Volts	115 Volts	115 Volts	115 Volts
Hoist Limit Switch	Upper block control circuit	Upper block control circuit	Upper block control circuit	Upper block control circuit	Upper block control circuit
Rope Drum Diameter	7-1/2"	7-1/2"	7-1/2"	7-1/2"	7-1/2"
Rope Drum Material	Cast Iron	Cast Iron	Cast Iron	Cast Iron	Cast Iron
Sheave Diameter	5"	5"	6"	6"	6"
Sheave Material	Steel	Steel	Steel	Steel	Steel
Trolley Gearing	Worm	Worm	Worm	Worm	Worm
Trolley Motor	30-minute rated TENV	30-minute rated TENV	30-minute rated TENV	30-minute rated TENV	30-minute rated TENV
Trolley Brake	Optional AC Disc	Optional AC Disc	Optional AC Disc	Optional AC Disc	Optional AC Disc
Trolley Control	1-speed	1-speed	1-speed	1-speed	1-speed
Wheels	4"	4"	4"	4" for 45' lift 6-1/2" for 30' lift	6-1/2"
Bumpers	Optional Rubber	Optional Rubber	Optional Rubber	Optional Rubber	Optional Rubber
Bearings	Anti-friction	Anti-friction	Anti-friction	Anti-friction	Anti-friction
Motor TAS	Standard	Standard	Standard	Standard	Standard
Control Enclosure	NEMA 1	NEMA 1	NEMA 1	NEMA 1	NEMA 1

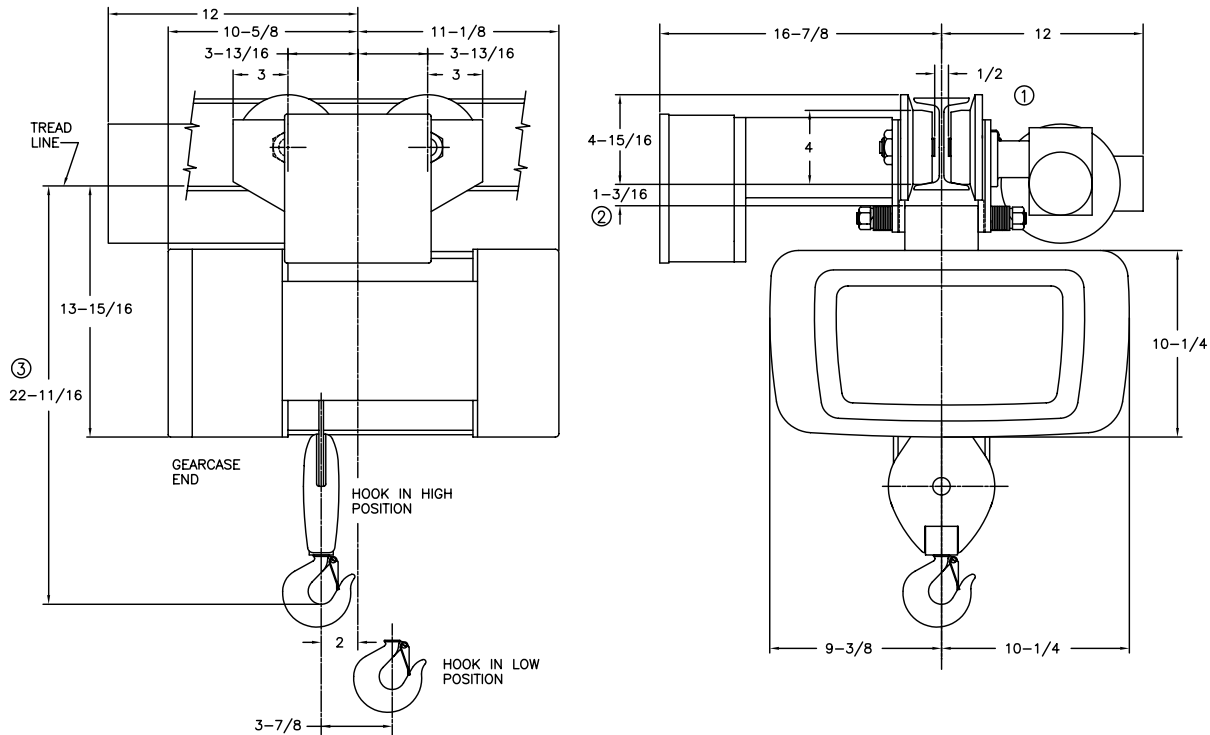
Single Reeved

1/2 Ton

ELECTRIC WIRE ROPE

Y80 - 800 Series

MOTOR DRIVEN TROLLEY



MINIMUM RADIUS: 3'-6"

CATALOG NUMBER	HOIST				TROLLEY		WEIGHT (LBS)	ESTIMATED WHEEL LOAD*	
	MAX LIFT (FT)	HOIST SPEED (FPM)	HP	ROPE NO & DIA	SPEED (FPM)	HP		HIGH HOOK (LBS)	LOW HOOK (LBS)
†80M.5-025S18-1	25	18	1	2-1/4	75	1/4	260	507	498
†80M.5-025S18-2	25	18/6	1/33	2-1/4	75	1/4	301	519	509
†80M.5-025S35-1	25	35	2	2-1/4	75	1/4	260	511	502
†80M.5-025S35-2	25	35/11.7	2/66	2-1/4	75	1/4	301	522	513
†80M.5-025S50-1	25	50	4	2-1/4	75	1/4	291	550	540
†80M.5-025S50-2	25	50/16.6	3/1	2-1/4	75	1/4	332	561	551

Weights shown are for standard hoists listed. For approximate shipping weights, add 110 lbs. to the net weight given. Consult factory for weights of special hoists. Dimensions shown are in inches unless otherwise noted.

When used on smallest I-beam size, beam must be free of all obstructions, such as clips, suspension bolts, and nuts. Trolleys for wide flange beams refer to Optional Equipment.

Trolley beam size range – beam flange width 3" min., 5" max; beam depth 6" min. standard, 5-1/8"-7-1/4" with 1st extension, 7-1/2"-9-1/8" with 2nd extension. See Optional Price section for extension pricing.

① Occurs on smallest beam size only. On larger beams, it is increased by the difference in flange width.

② Clearance shown is between lug and wheel tread.

③ Dimension increases 3" when hoist is equipped with screw type limit switch.

* Estimated wheel load per one (1) wheel. Includes live and dead load impacts.

† For a Y80 add a "Y" prefix.

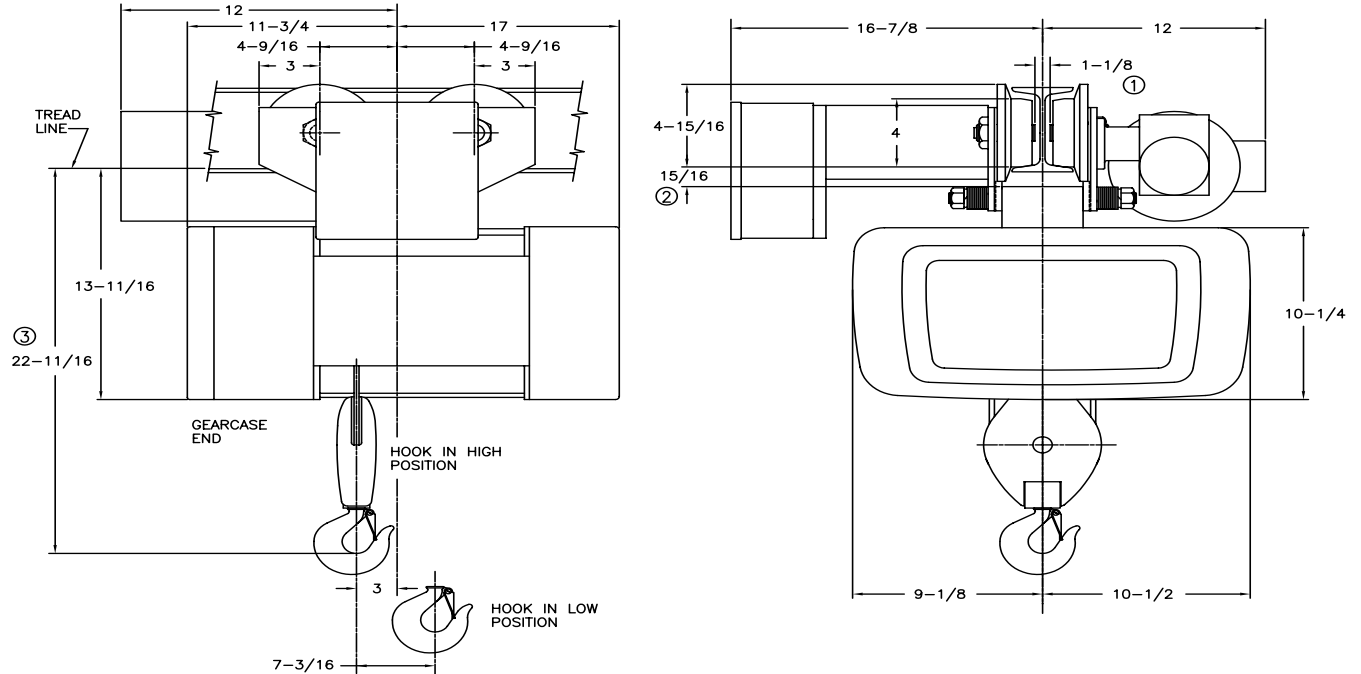
Single Reeved

1/2 Ton

ELECTRIC WIRE ROPE

Y80 - 800 Series

MOTOR DRIVEN TROLLEY



MINIMUM STANDARD RADIUS: 5'-0", FOR SMALLER RADIUS CONTACT FACTORY

CATALOG NUMBER	HOIST				TROLLEY		WEIGHT (LBS)	ESTIMATED WHEEL LOAD*	
	MAX LIFT (FT)	HOIST SPEED (FPM)	HP	ROPE NO & DIA	SPEED (FPM)	HP		HIGH HOOK (LBS)	LOW HOOK (LBS)
†80M.5-050S18-1	50	18	1	2-1/4	60	1/4	385	582	657
†80M.5-050S18-2	50	18/6	1/.33	2-1/4	60	1/4	420	592	667
†80M.5-050S35-1	50	35	2	2-1/4	60	1/4	385	587	662
†80M.5-050S35-2	50	35/11.7	2/.66	2-1/4	60	1/4	420	596	672
†80M.5-050S50-1	50	50	4	2-1/4	60	1/4	416	628	709
†80M.5-050S50-2	50	50/16.6	3/1	2-1/4	60	1/4	451	638	719

Weights shown are for standard hoists listed. For approximate shipping weights, add 110 lbs. to the net weight given. Consult factory for weights of special hoists. Dimensions shown are in inches unless otherwise noted.

When used on smallest I-beam size, beam must be free of all obstructions, such as clips, suspension bolts, and nuts. Trolleys for wide flange beams refer to Optional Equipment.

Trolley beam size range – beam flange width 3-5/8" min., 6-1/4" max; beam depth 6" min. standard, 6-1/4"-8-5/8" with 1st extension, 8-7/8"-11-1/4" with 2nd extension. See Optional Price section for extension pricing.

① Occurs on smallest beam size only. On larger beams, it is increased by the difference in flange width.

② Clearance shown is between lug and wheel tread.

③ Dimension increases 3" when hoist is equipped with screw type limit switch.

* Estimated wheel load per one (1) wheel. Includes live and dead load impacts.

† For a Y80 add a "Y" prefix.

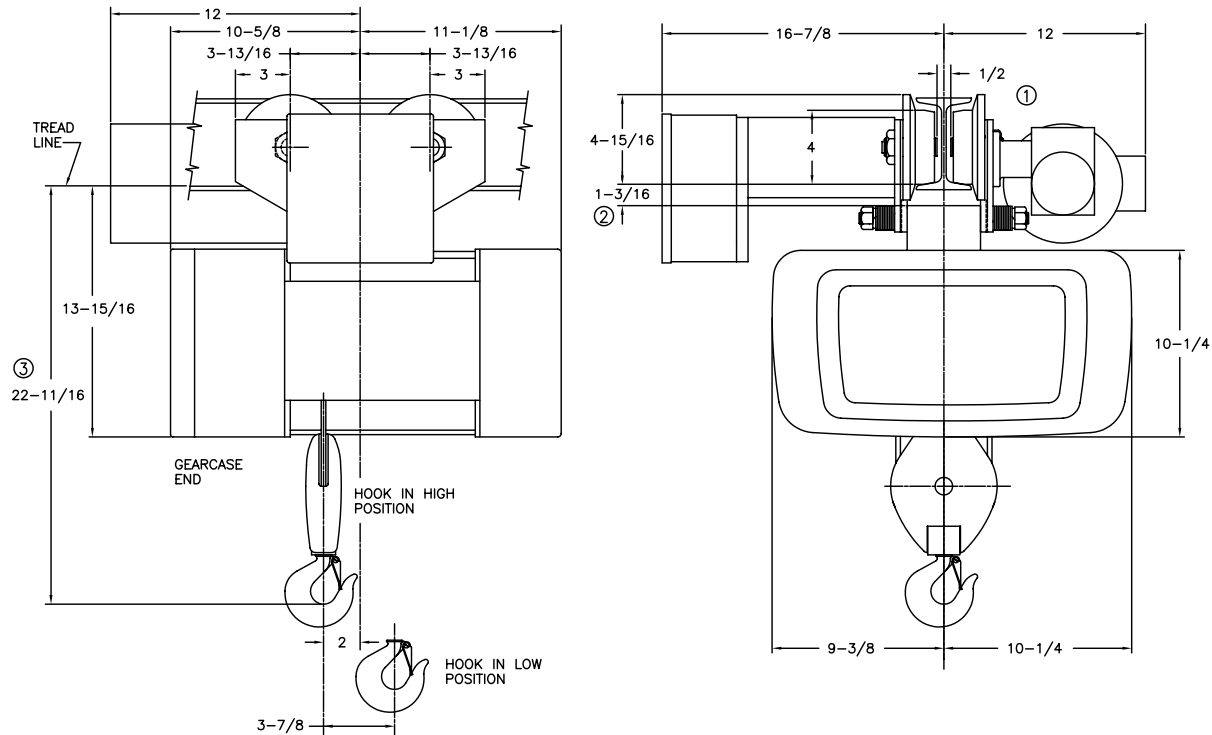
Single Reeved

1 Ton

ELECTRIC WIRE ROPE

Y80 - 800 Series

MOTOR DRIVEN TROLLEY



MINIMUM RADIUS: 3'-6"

CATALOG NUMBER	HOIST				TROLLEY		WEIGHT (LBS)	ESTIMATED WHEEL LOAD*	
	MAX LIFT (FT)	HOIST SPEED (FPM)	HP	ROPE NO & DIA	SPEED (FPM)	HP		HIGH HOOK (LBS)	LOW HOOK (LBS)
†80M01-025S18-1	25	18	2	2-1/4	75	1/4	266	945	926
†80M01-025S18-2	25	18/6	2/.66	2-1/4	75	1/4	301	955	936
†80M01-025S28-1	25	28	2	2-1/4	75	1/4	291	959	941
†80M01-025S28-2	25	28/9.4	2/.66	2-1/4	75	1/4	301	962	943
†80M01-025S50-1	25	50	4	2-1/4	75	1/4	291	1020	1000
†80M01-025S50-2	25	50/25	4/2	2-1/4	75	1/4	301	1023	1003

Weights shown are for standard hoists listed. For approximate shipping weights, add 110 lbs. to the net weight given. Consult factory for weights of special hoists. Dimensions shown are in inches unless otherwise noted.

When used on smallest I-beam size, beam must be free of all obstructions, such as clips, suspension bolts, and nuts. Trolleys for wide flange beams refer to Optional Equipment.

Trolley beam size range – beam flange width 3" min., 5" max; beam depth 6" min. standard, 5-1/8"-7-1/4" with 1st extension, 7-1/2"-9-1/8" with 2nd extension. See Optional Price section for extension pricing.

① Occurs on smallest beam size only. On larger beams, it is increased by the difference in flange width.

② Clearance shown is between lug and wheel tread.

③ Dimension increases 3" when hoist is equipped with screw type limit switch.

* Estimated wheel load per one (1) wheel. Includes live and dead load impacts.

† For a Y80 add a "Y" prefix.

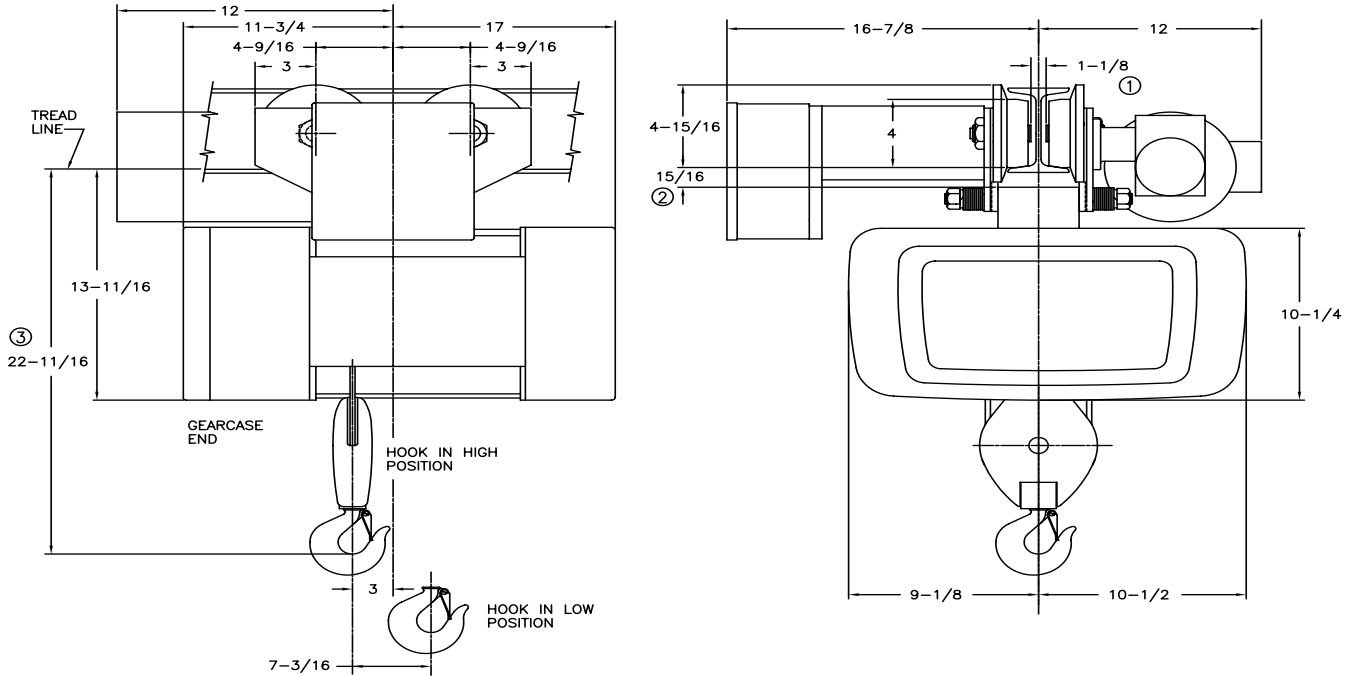
Single Reeved

1 Ton

ELECTRIC WIRE ROPE

Y80 - 800 Series

MOTOR DRIVEN TROLLEY



MINIMUM STANDARD RADIUS: 5'-0", FOR SMALLER RADIUS CONTACT FACTORY

CATALOG NUMBER	HOIST				TROLLEY		WEIGHT (LBS)	ESTIMATED WHEEL LOAD*	
	MAX LIFT (FT)	HOIST SPEED (FPM)	HP	ROPE NO & DIA	SPEED (FPM)	HP		HIGH HOOK (LBS)	LOW HOOK (LBS)
†80M01-050S18-1	50	18	2	2-1/4	60	1/4	385	1059	1209
†80M01-050S18-2	50	18/6	2/.66	2-1/4	60	1/4	420	1069	1218
†80M01-050S28-1	50	28	2	2-1/4	60	1/4	415	1075	1226
†80M01-050S28-2	50	28/9.4	2/.66	2-1/4	60	1/4	420	1077	1228
†80M01-050S50-1	50	50	4	2-1/4	60	1/4	415	1142	1303
†80M01-050S50-2	50	50/25	4/2	2-1/4	60	1/4	420	1143	1305

Weights shown are for standard hoists listed. For approximate shipping weights, add 110 lbs. to the net weight given. Consult factory for weights of special hoists. Dimensions shown are in inches unless otherwise noted.

When used on smallest I-beam size, beam must be free of all obstructions, such as clips, suspension bolts, and nuts. Trolleys for wide flange beams refer to Optional Equipment.

Trolley beam size range – beam flange width 3-5/8" min., 6-1/4" max; beam depth 6" min. standard, 6-1/4"-8-5/8" with 1st extension, 8-7/8"-11-1/4" with 2nd extension. See Optional Price section for extension pricing.

① Occurs on smallest beam size only. On larger beams, it is increased by the difference in flange width.

② Clearance shown is between lug and wheel tread.

③ Dimension increases 3" when hoist is equipped with screw type limit switch.

* Estimated wheel load per one (1) wheel. Includes live and dead load impacts.

† For a Y80 add a "Y" prefix.

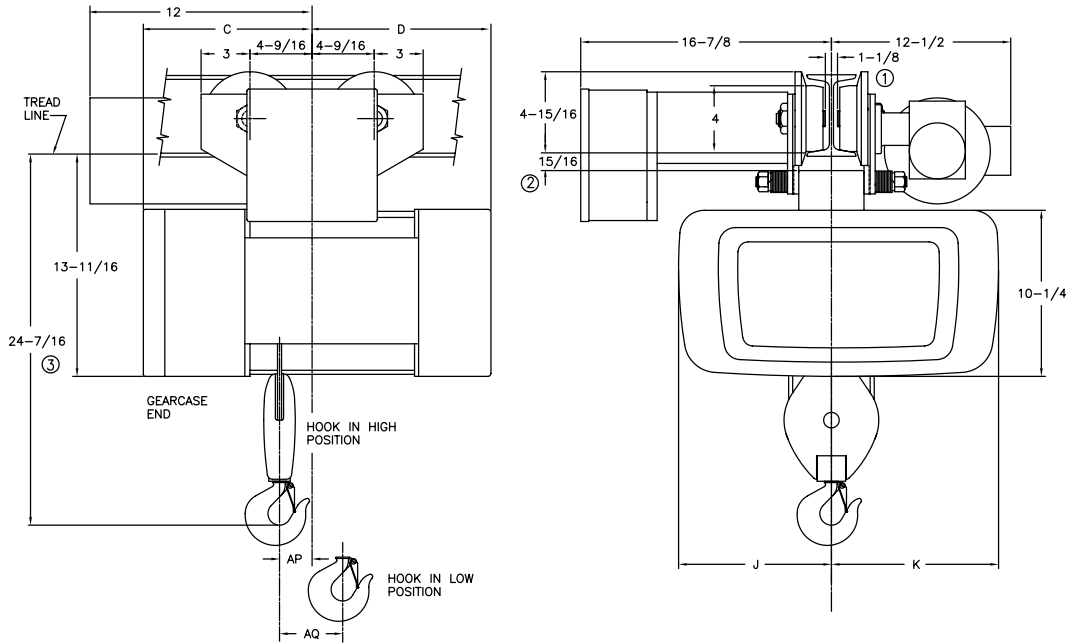
Single Reeved

2 Ton

ELECTRIC WIRE ROPE

Y80 - 800 Series

MOTOR DRIVEN TROLLEY



MINIMUM STANDARD RADIUS: 5'-0", FOR SMALLER RADIUS CONTACT FACTORY

CATALOG NUMBER	HOIST				TROLLEY		WEIGHT (LBS)	C	D	J	K	AP	AQ	ESTIMATED WHEEL LOAD*	
	MAX LIFT (FT)	HOIST SPEED (FPM)	HP	ROPE NO & DIA	SPEED (FPM)	HP								HIGH HOOK (LBS)	LOW HOOK (LBS)
†80M02-020S14-1	20	14	2	2-5/16	60	1/4	385	10-5/8	11-1/8	9-3/8	10-1/4	2	3-7/8	1760	1728
†80M02-020S14-2	20	14/4.66	2/66	2-5/16	60	1/4	400	10-5/8	11-1/8	9-3/8	10-1/4	2	3-7/8	1764	1733
†80M02-020S28-1	20	28	4	2-5/16	60	1/4	385	10-5/8	11-1/8	9-3/8	10-1/4	2	3-7/8	1760	1728
†80M02-020S28-2	20	28/14	4/2	2-5/16	60	1/4	400	10-5/8	11-1/8	9-3/8	10-1/4	2	3-7/8	1764	1733
†80M02-040S14-1	40	14	2	2-5/16	60	1/4	410	11-3/4	17	9-1/8	10-1/2	3	7-3/8	2019	2365
†80M02-040S14-2	40	14/4.66	2/66	2-5/16	60	1/4	425	11-3/4	17	9-1/8	10-1/2	3	7-3/8	2023	2370
†80M02-040S28-1	40	28	4	2-5/16	60	1/4	410	11-3/4	17	9-1/8	10-1/2	3	7-3/8	2019	2365
†80M02-040S28-2	40	28/14	4/2	2-5/16	60	1/4	425	11-3/4	17	9-1/8	10-1/2	3	7-3/8	2023	2370

Weights shown are for standard hoists listed. For approximate shipping weights, add 110 lbs. to the net weight given. Consult factory for weights of special hoists. Dimensions shown are in inches unless otherwise noted.

When used on smallest I-beam size, beam must be free of all obstructions, such as clips, suspension bolts, and nuts. Trolleys for wide flange beams refer to Optional Equipment.

Trolley beam size range – beam flange width 3-5/8" min., 6-1/4" max; beam depth 6" min. standard, 6-1/4"-8-5/8" with 1st extension, 8-7/8"-11-1/4" with 2nd extension. See Optional Price section for extension pricing.

① Occurs on smallest beam size only. On larger beams, it is increased by the difference in flange width.

② Clearance shown is between lug and wheel tread.

③ Dimension increases 3" when hoist is equipped with screw type limit switch.

* Estimated wheel load per one (1) wheel. Includes live and dead load impacts.

† For a Y80 add a "Y" prefix.

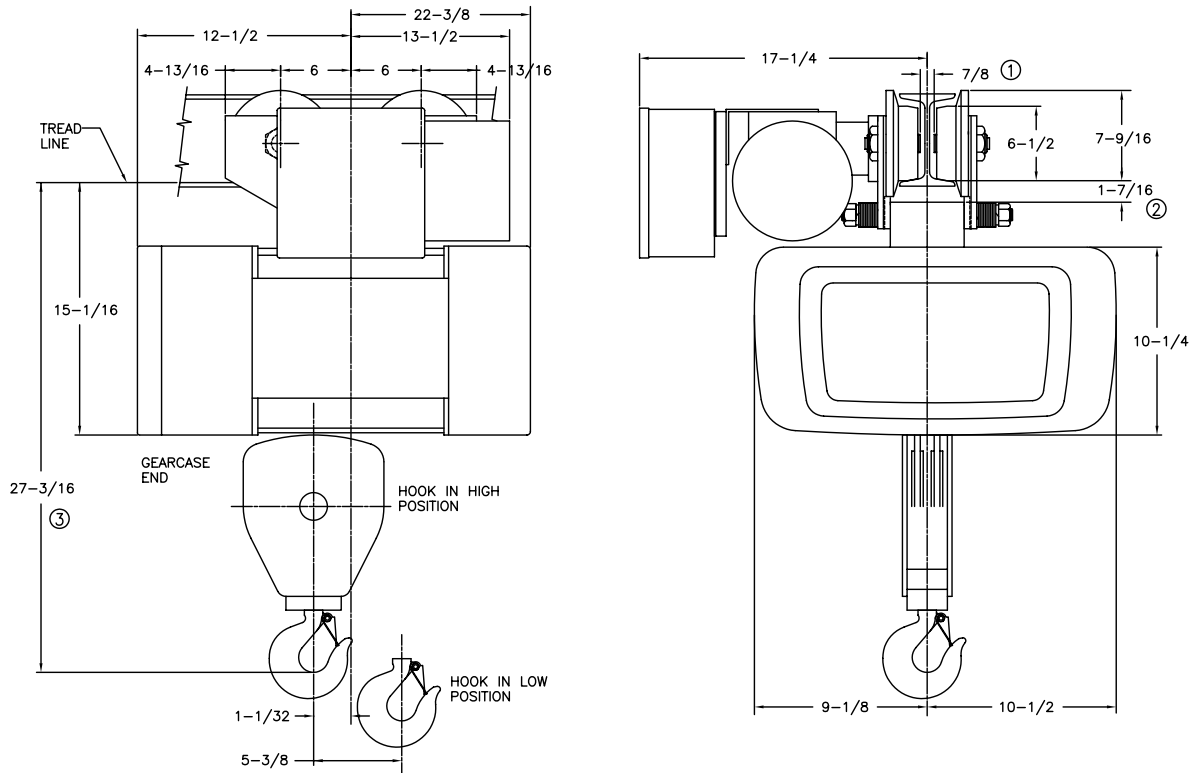
Single Reeved

3 Ton

ELECTRIC WIRE ROPE

Y80 - 800 Series

MOTOR DRIVEN TROLLEY



MINIMUM STANDARD RADIUS: 7'-0", FOR SMALLER RADIUS CONTACT FACTORY

CATALOG NUMBER	HOIST				TROLLEY		WEIGHT (LBS)	ESTIMATED WHEEL LOAD*	
	MAX LIFT (FT)	HOIST SPEED (FPM)	HP	ROPE NO & DIA	SPEED (FPM)	HP		HIGH HOOK (LBS)	LOW HOOK (LBS)
†80M03-030S09-1	30	9	2	4-5/16	50	1/2	535	2169	3121
†80M03-030S09-2	30	9/3	2/.66	4-5/16	50	1/2	550	2173	3125
†80M03-030S18-1	30	18	4	4-5/16	50	1/2	525	2166	3118
†80M03-030S18-2	30	18/9	4/2	4-5/16	50	1/2	540	2170	3122

Weights shown are for standard hoists listed. For approximate shipping weights, add 110 lbs. to the net weight given. Consult factory for weights of special hoists. Dimensions shown are in inches unless otherwise noted.

When used on smallest I-beam size, beam must be free of all obstructions, such as clips, suspension bolts, and nuts. Trolleys for wide flange beams refer to Optional Equipment.

Trolley beam size range – beam flange width 4" min., 6-1/4" max; beam depth 8" min. standard, 6-3/8"-8-5/8" with 1st extension, 8-3/4"-11" with 2nd extension. See Optional Price section for extension pricing.

① Occurs on smallest beam size only. On larger beams, it is increased by the difference in flange width.

② Clearance shown is between lug and wheel tread.

③ Dimension increases 3" when hoist is equipped with screw type limit switch.

* Estimated wheel load per one (1) wheel. Includes live and dead load impacts.

† For a Y80 add a "Y" prefix.

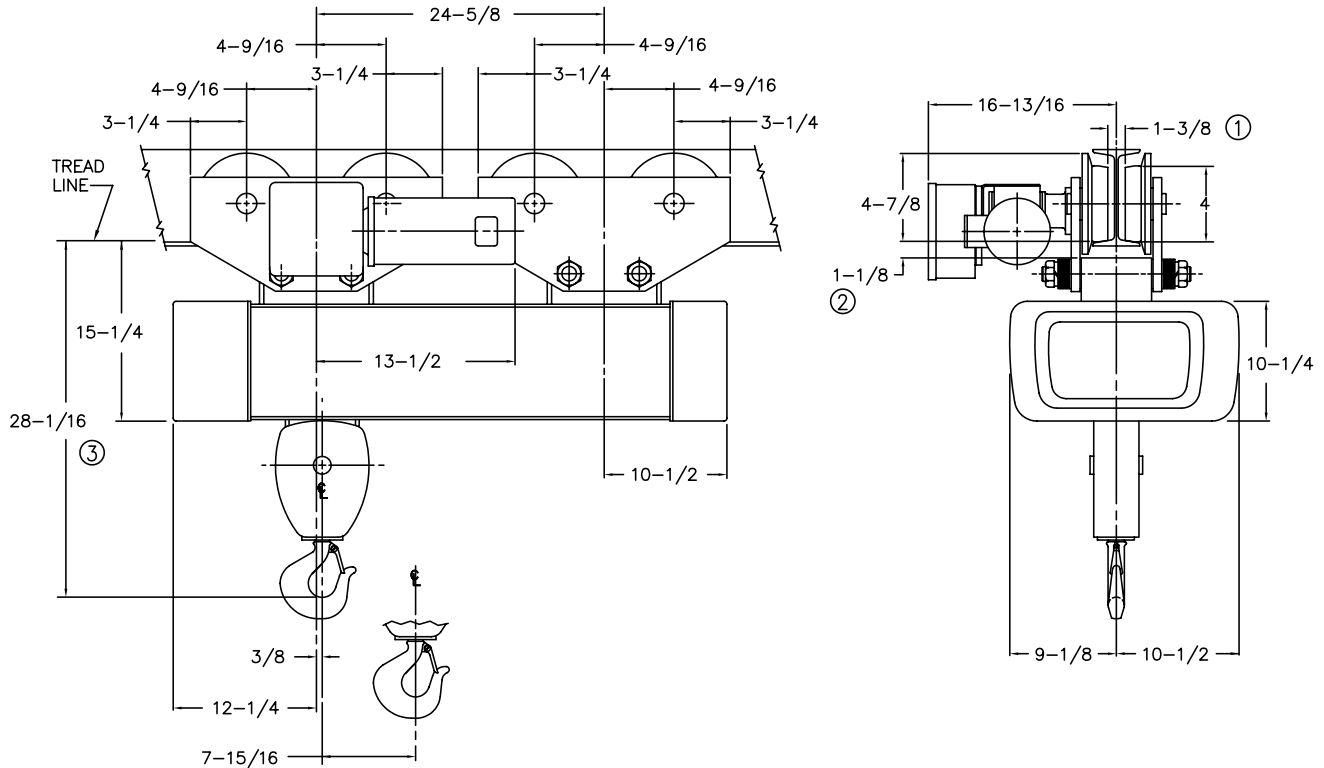
Single Reeved

3 Ton

ELECTRIC WIRE ROPE

Y80 - 800 Series

MOTOR DRIVEN TROLLEY



MINIMUM RADIUS: Straight Track ④

CATALOG NUMBER	HOIST				TROLLEY		WEIGHT (LBS)	ESTIMATED WHEEL LOAD*	
	MAX LIFT (FT)	HOIST SPEED (FPM)	HP	ROPE NO & DIA	SPEED (FPM)	HP		HIGH HOOK (LBS)	LOW HOOK (LBS)
†80M03-045S09-1	45	9	2	4-5/16	50	1/2	725	1834	1267
†80M03-045S09-2	45	9/3	2/.66	4-5/16	50	1/2	755	1839	1272
†80M03-045S18-1	45	18	4	4-5/16	50	1/2	755	1839	1272
†80M03-045S18-2	45	18/9	4/2	4-5/16	50	1/2	785	1843	1276

Weights shown are for standard hoists listed. For approximate shipping weights, add 110 lbs. to the net weight given. Consult factory for weights of special hoists. Dimensions shown are in inches unless otherwise noted.

When used on smallest I-beam size, beam must be free of all obstructions, such as clips, suspension bolts, and nuts. Trolleys for wide flange beams refer to Optional Equipment.

Trolley beam size range – beam flange width 4" min., 6-1/4" max; beam depth 8" min. standard, 6-3/8"-8-5/8" with 1st extension, 8-3/4"-11" with 2nd extension. See Optional Price section for extension pricing.

① Occurs on smallest beam size only. On larger beams, it is increased by the difference in flange width.

② Clearance shown is between lug and wheel tread.

③ Dimension increases 3" when hoist is equipped with screw type limit switch.

④ Can negotiate curves with addition of swivel trolley option from the pricing section. Headroom increases by 5-1/2".

* Estimated wheel load per one (1) wheel. Includes live and dead load impacts.

† For a Y80 add a "Y" prefix.

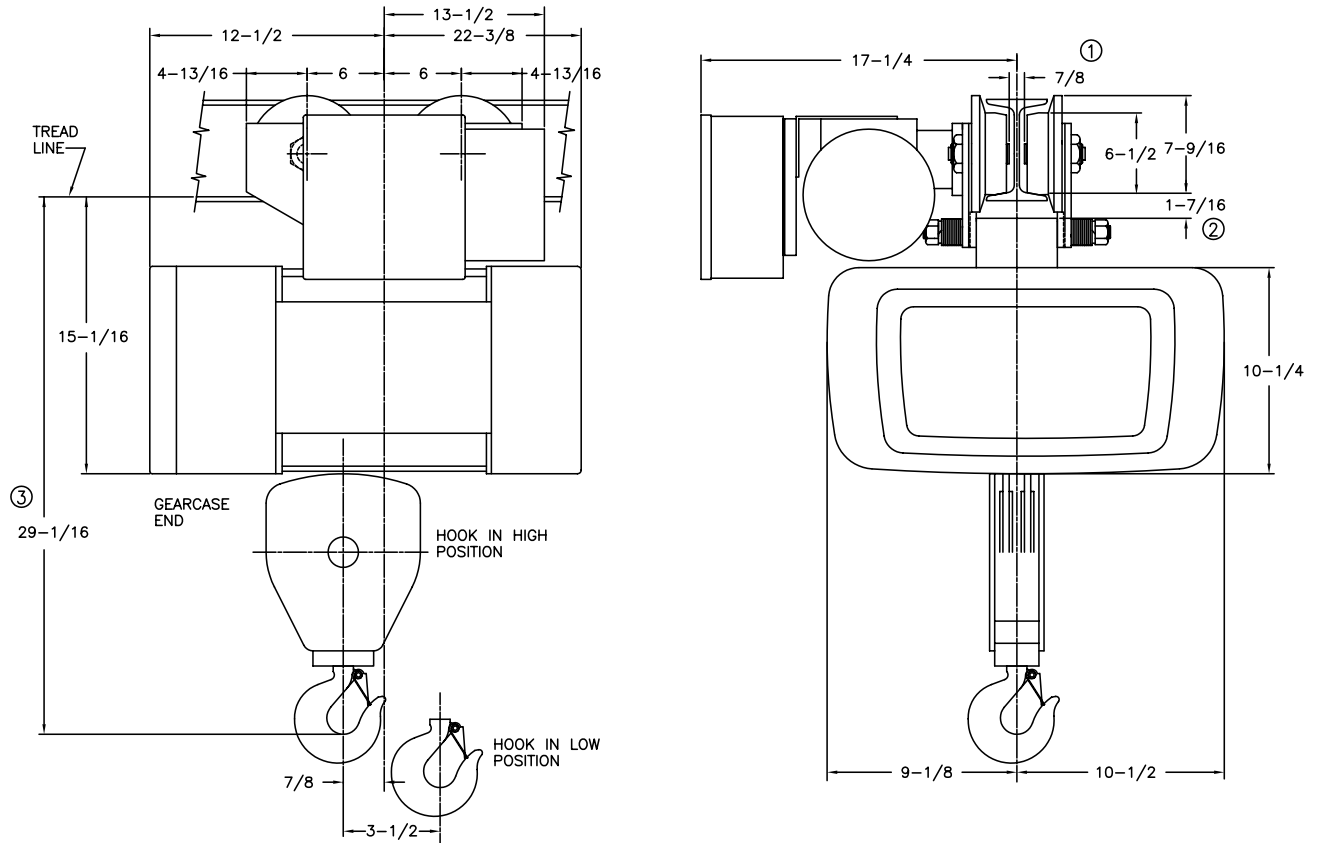
Single Reeved

5 Ton

ELECTRIC WIRE ROPE

Y80 - 800 Series

MOTOR DRIVEN TROLLEY



MINIMUM STANDARD RADIUS: 7'-0", FOR SMALLER RADIUS CONTACT FACTORY

CATALOG NUMBER	HOIST				TROLLEY		WEIGHT (LBS)	ESTIMATED WHEEL LOAD*	
	MAX LIFT (FT)	HOIST SPEED (FPM)	HP	ROPE NO & DIA	SPEED (FPM)	HP		HIGH HOOK (LBS)	LOW HOOK (LBS)
†80M05-020S10-1	20	10	4	6-5/16	50	1/2	545	3444	4283
†80M05-020S10-2	20	10/5	4/2	6-5/16	50	1/2	560	3448	4287

Weights shown are for standard hoists listed. For approximate shipping weights, add 110 lbs. to the net weight given. Consult factory for weights of special hoists. Dimensions shown are in inches unless otherwise noted.

When used on smallest I-beam size, beam must be free of all obstructions, such as clips, suspension bolts, and nuts. Trolleys for wide flange beams refer to Optional Equipment.

Trolley beam size range – beam flange width 4" min., 6-1/4" max; beam depth 8" min. standard, 6-3/8"-8-5/8" with 1st extension, 8-3/4"-11" with 2nd extension. See Optional Price section for extension pricing.

① Occurs on smallest beam size only. On larger beams, it is increased by the difference in flange width.

② Clearance shown is between lug and wheel tread.

③ Dimension increases 3" when hoist is equipped with screw type limit switch.

* Estimated wheel load per one (1) wheel. Includes live and dead load impacts.

† For a Y80 add a "Y" prefix.

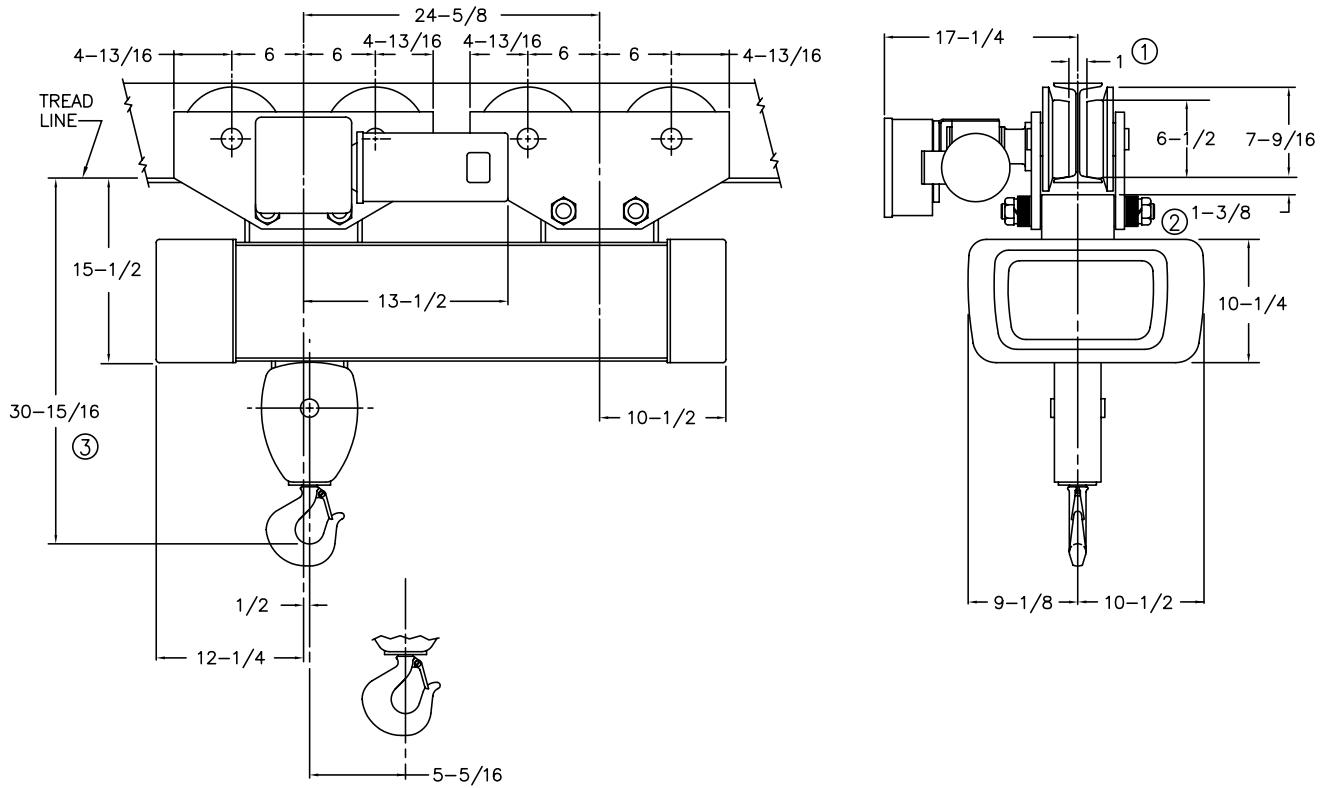
Single Reeved

5 Ton

ELECTRIC WIRE ROPE

Y80 - 800 Series

MOTOR DRIVEN TROLLEY



MINIMUM RADIUS: Straight Track ④

CATALOG NUMBER	HOIST				TROLLEY		WEIGHT (LBS)	ESTIMATED WHEEL LOAD*	
	MAX LIFT (FT)	HOIST SPEED (FPM)	HP	ROPE NO & DIA	SPEED (FPM)	HP		HIGH HOOK (LBS)	LOW HOOK (LBS)
†80M05-030S10-1	30	10	4	6-5/16	50	1/2	850	2992	2359
†80M05-030S10-2	30	10/5	4/2	6-5/16	50	1/2	875	2996	2363

Weights shown are for standard hoists listed. For approximate shipping weights, add 110 lbs. to the net weight given. Consult factory for weights of special hoists. Dimensions shown are in inches unless otherwise noted.

When used on smallest I-beam size, beam must be free of all obstructions, such as clips, suspension bolts, and nuts. Trolleys for wide flange beams refer to Optional Equipment.

Trolley beam size range – beam flange width 4" min., 6-1/4" max; beam depth 8" min. standard, 6-3/8"-8-5/8" with 1st extension, 8-3/4"-11" with 2nd extension. See Optional Price section for extension pricing.

- ① Occurs on smallest beam size only. On larger beams, it is increased by the difference in flange width.
- ② Clearance shown is between lug and wheel tread.
- ③ Dimension increases 3" when hoist is equipped with screw type limit switch.
- ④ Can negotiate curves with addition of swivel trolley from the option pricing section. Headroom increases by 4-5/8".

* Estimated wheel load per one (1) wheel. Includes live and dead load impacts.

† For a Y80 add a "Y" prefix.

Standard Features

Dimensions & Specifications

ELECTRIC WIRE ROPE

Y80 - 800 Series

Double Reeved Electric Hoists with Motor Driven Trolleys

Feature	1/2 Ton	1 Ton	2 Ton
Service Class	H-4	H-4	H-4
Reeved	4 PD - 3/16"	4 PD - 3/16"	4 PD - 1/4'
Hoist Gearing	Triple reduction Helical/Spur	Triple reduction Helical/Spur	Triple reduction Helical/Spur
Hook Assembly	Bearing Thrust Washer 360 degree rotate	Bearing Thrust Washer 360 degree rotate	Bearing Thrust Washer 360 degree rotate
Hoist Motor	30-minute rated TENV	30-minute rated TENV	30-minute rated TENV
Hoist Motor Brake (AC)	100% Torque disc	100% Torque disc	100% Torque disc
Load Brake	Weston type Roller Ratchet	Weston type Roller Ratchet	Weston type Roller Ratchet
Hoist Control	1-speed	1-speed	1-speed
Control Circuit voltage	115 Volts	115 Volts	115 Volts
Hoist Limit Switch	Upper block control circuit	Upper block control circuit	Upper block control circuit
Rope Drum Diameter	7-1/2"	7-1/2"	7-1/2"
Rope Drum Material	Cast Iron	Cast Iron	Cast Iron
Sheave Diameter	5"	5"	5"
Sheave Material	Steel	Steel	Steel
Trolley Gearing	Worm	Worm	Worm
Trolley Motor	30-minute rated TENV	30-minute rated TENV	30-minute rated TENV
Trolley Brake	Optional AC Disc	Optional AC Disc	Optional AC Disc
Trolley Control	1-speed	1-speed	1-speed
Wheels	4"	4"	4"
Bumpers	Optional Rubber	Optional Rubber	Optional Rubber
Bearings	Anti-friction	Anti-friction	Anti-friction
Motor TAS	Standard	Standard	Standard
Control Enclosure	NEMA 1	NEMA 1	NEMA 1

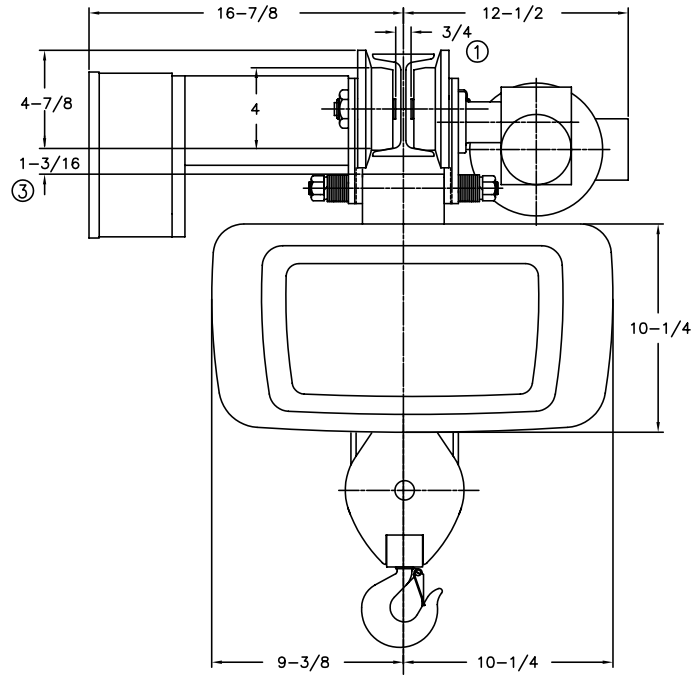
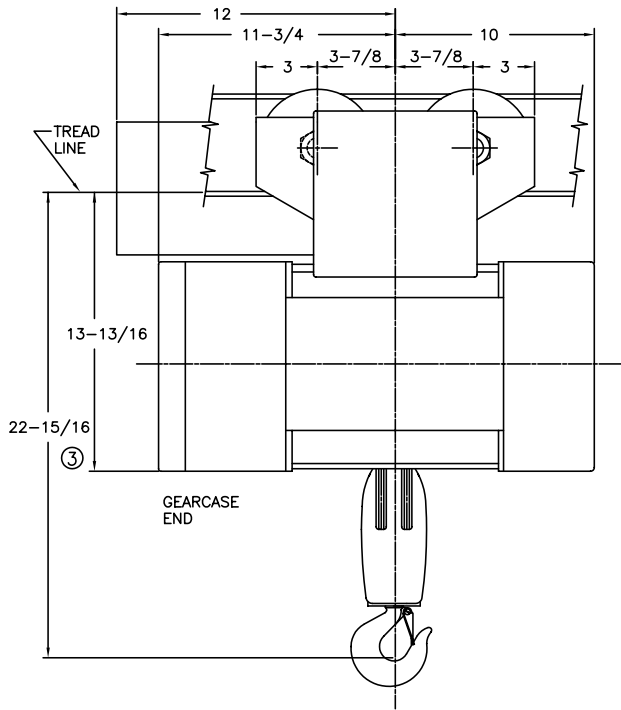
Double Reeved

1/2 Ton

ELECTRIC WIRE ROPE

Y80 - 800 Series

MOTOR DRIVEN TROLLEY



MINIMUM STANDARD RADIUS: 3'-6"

CATALOG NUMBER	HOIST				TROLLEY		WEIGHT (LBS)	ESTIMATED WHEEL LOAD* (LBS)
	MAX LIFT (FT)	HOIST SPEED (FPM)	HP	ROPE NO & DIA	SPEED (FPM)	HP		
†80M.5-018D18-1	18	18	1	4/2-3/16	75	1/4	260	359
†80M.5-018D18-2	18	18/6	1/.33	4/2-3/16	75	1/4	300	370
†80M.5-018D35-1	18	35	2	4/2-3/16	75	1/4	260	362
†80M.5-018D35-2	18	35/11.7	2/.66	4/2-3/16	75	1/4	300	373
†80M.5-018D50-1	18	50	4	4/2-3/16	75	1/4	291	390
†80M.5-018D50-2	18	50/16.6	3/1	4/2-3/16	75	1/4	331	401

Weights shown are for standard hoists listed. For approximate shipping weights, add 110 lbs. to the net weight given. Consult factory for weights of special hoists. Dimensions shown are in inches unless otherwise noted.

When used on smallest I-beam size, beam must be free of all obstructions, such as clips, suspension bolts, and nuts. Trolleys for wide flange beams refer to Optional Equipment.

Trolley beam size range – beam flange width 3" min., 5" max; beam depth 6" min. standard, 5-1/8"-7-1/4" with 1st extension, 7-1/2"-9-1/8" with 2nd extension. See Optional Price section for extension pricing.

① Occurs on smallest beam size only. On larger beams, it is increased by the difference in flange width.

② Clearance shown is between lug and wheel tread.

③ Dimension increases 3" when hoist is equipped with screw type limit switch.

* Estimated wheel load per one (1) wheel. Includes live and dead load impacts.

† For a Y80 add a "Y" prefix.

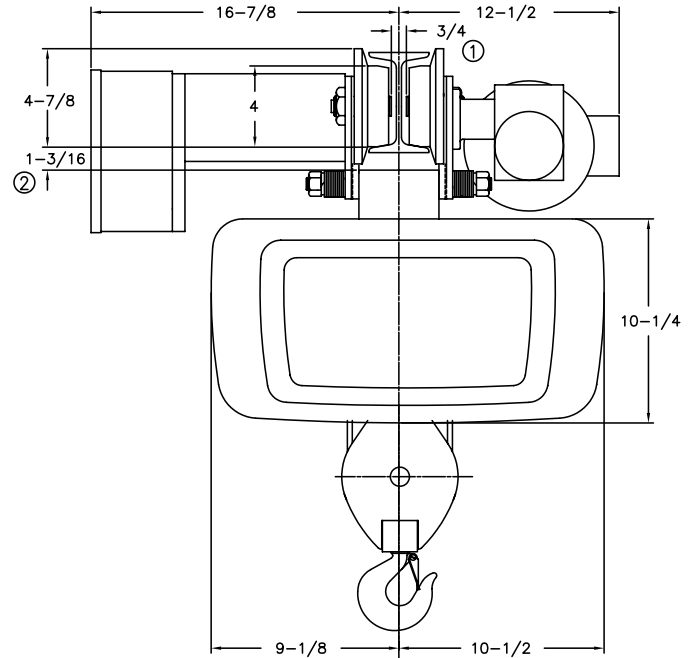
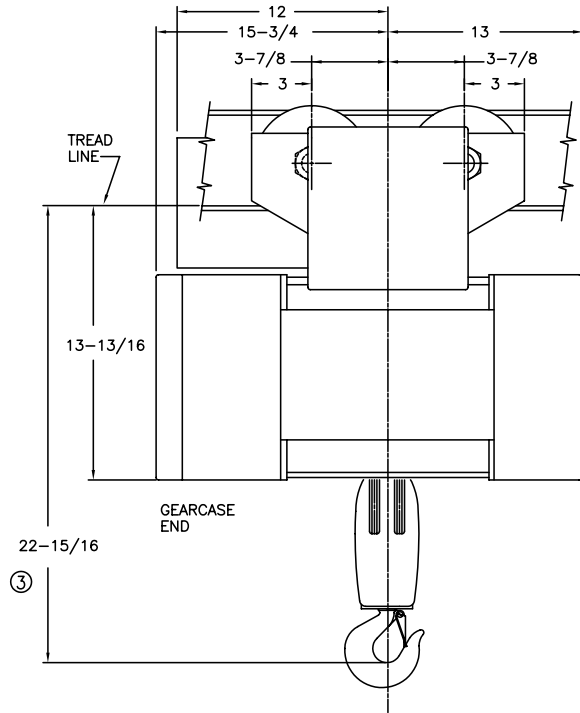
Double Reeved

1/2 Ton

ELECTRIC WIRE ROPE

Y80 - 800 Series

MOTOR DRIVEN TROLLEY



MINIMUM STANDARD RADIUS: 3'-6"

CATALOG NUMBER	HOIST				TROLLEY		WEIGHT (LBS)	ESTIMATED WHEEL LOAD* (LBS)
	MAX LIFT (FT)	HOIST SPEED (FPM)	HP	ROPE NO & DIA	SPEED (FPM)	HP		
†80M.5-034D18-1	34	18	1	4/2-3/16	50	1/4	385	393
†80M.5-034D18-2	34	18/6	1/.33	4/2-3/16	50	1/4	420	403
†80M.5-034D35-1	34	35	2	4/2-3/16	50	1/4	385	396
†80M.5-034D35-2	34	35/11.7	2/.66	4/2-3/16	50	1/4	420	406
†80M.5-034D50-1	34	50	4	4/2-3/16	50	1/4	416	424
†80M.5-034D50-2	34	50/16.6	3/1	4/2-3/16	50	1/4	451	434

Weights shown are for standard hoists listed. For approximate shipping weights, add 110 lbs. to the net weight given. Consult factory for weights of special hoists. Dimensions shown are in inches unless otherwise noted.

When used on smallest I-beam size, beam must be free of all obstructions, such as clips, suspension bolts, and nuts. Trolleys for wide flange beams refer to Optional Equipment.

Trolley beam size range – beam flange width 3" min., 5" max; beam depth 6" min. standard, 5-1/8"-7-1/4" with 1st extension, 7-1/2"-9-1/8" with 2nd extension. See Optional Price section for extension pricing.

① Occurs on smallest beam size only. On larger beams, it is increased by the difference in flange width.

② Clearance shown is between lug and wheel tread.

③ Dimension increases 3" when hoist is equipped with screw type limit switch.

* Estimated wheel load per one (1) wheel. Includes live and dead load impacts.

† For a Y80 add a "Y" prefix.

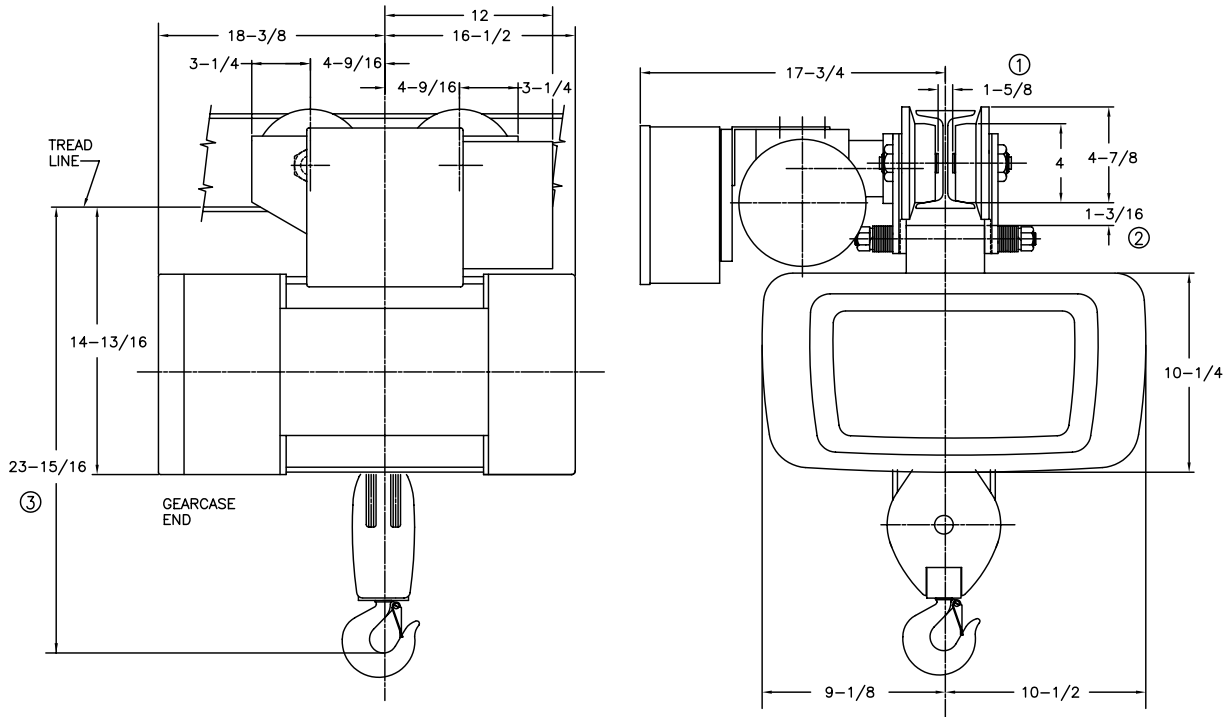
Double Reeved

1/2 Ton

ELECTRIC WIRE ROPE

Y80 - 800 Series

MOTOR DRIVEN TROLLEY



MINIMUM STANDARD RADIUS: 5'-0"

CATALOG NUMBER	HOIST				TROLLEY		WEIGHT (LBS)	ESTIMATED WHEEL LOAD* (LBS)
	MAX LIFT (FT)	HOIST SPEED (FPM)	HP	ROPE NO & DIA	SPEED (FPM)	HP		
†80M.5-047D18-1	47	18	1	4/2-3/16	50	1/4	385	393
†80M.5-047D18-2	47	18/6	1/.33	4/2-3/16	50	1/4	420	403
†80M.5-047D35-1	47	35	2	4/2-3/16	50	1/4	385	396
†80M.5-047D35-2	47	35/11.7	2/.66	4/2-3/16	50	1/4	420	406
†80M.5-047D50-1	47	50	4	4/2-3/16	50	1/4	591	473
†80M.5-047D50-2	47	50/16.6	3/1	4/2-3/16	50	1/4	626	482

Weights shown are for standard hoists listed. For approximate shipping weights, add 110 lbs. to the net weight given. Consult factory for weights of special hoists. Dimensions shown are in inches unless otherwise noted.

When used on smallest I-beam size, beam must be free of all obstructions, such as clips, suspension bolts, and nuts. Trolleys for wide flange beams refer to Optional Equipment.

Trolley beam size range – beam flange width 4" min., 6-1/4" max; beam depth 6" min. standard, 6-3/8"-8-5/8" with 1st extension, 8-3/4"-11" with 2nd extension. See Optional Price section for extension pricing.

① Occurs on smallest beam size only. On larger beams, it is increased by the difference in flange width.

② Clearance shown is between lug and wheel tread.

③ Dimension increases 3" when hoist is equipped with screw type limit switch.

* Estimated wheel load per one (1) wheel. Includes live and dead load impacts.

† For a Y80 add a "Y" prefix.

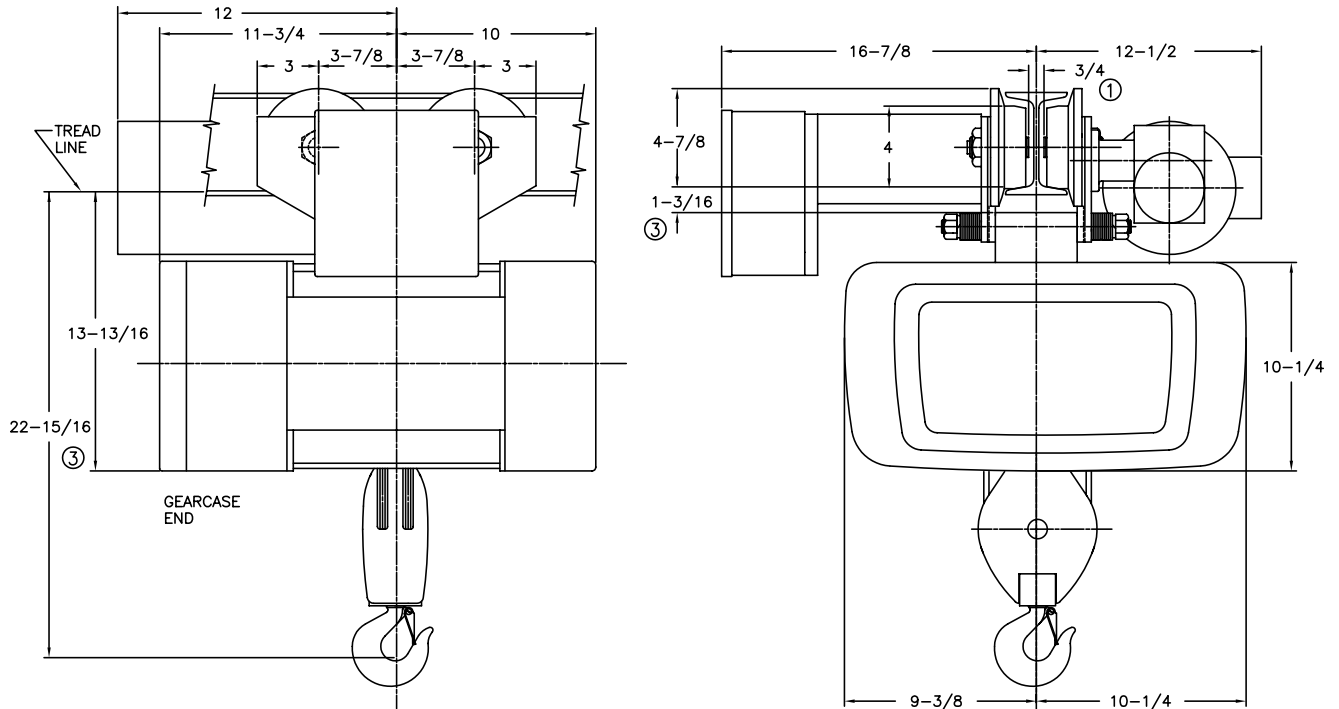
Double Reeved

1 Ton

ELECTRIC WIRE ROPE

Y80 - 800 Series

MOTOR DRIVEN TROLLEY



MINIMUM STANDARD RADIUS: 3'-6"

CATALOG NUMBER	HOIST				TROLLEY		WEIGHT (LBS)	ESTIMATED WHEEL LOAD* (LBS)
	MAX LIFT (FT)	HOIST SPEED (FPM)	HP	ROPE NO & DIA	SPEED (FPM)	HP		
†80M01-018D18-1	18	18	2	4/2-3/16	75	1/4	266	648
†80M01-018D18-2	18	18/6	2/.66	4/2-3/16	75	1/4	301	658
†80M01-018D28-1	18	28	2	4/2-3/16	75	1/4	291	660
†80M01-018D28-2	18	28/9.4	2/.66	4/2-3/16	75	1/4	301	663
†80M01-018D50-1	18	50	4	4/2-3/16	75	1/4	291	700
†80M01-018D50-2	18	50/25	4/2	4/2-3/16	75	1/4	301	703

Weights shown are for standard hoists listed. For approximate shipping weights, add 110 lbs. to the net weight given. Consult factory for weights of special hoists. Dimensions shown are in inches unless otherwise noted.

When used on smallest I-beam size, beam must be free of all obstructions, such as clips, suspension bolts, and nuts. Trolleys for wide flange beams refer to Optional Equipment.

Trolley beam size range – beam flange width 3" min., 5" max; beam depth 6" min. standard, 5-1/8"-7-1/4" with 1st extension, 7-1/2"-9-1/8" with 2nd extension. See Optional Price section for extension pricing.

① Occurs on smallest beam size only. On larger beams, it is increased by the difference in flange width.

② Clearance shown is between lug and wheel tread.

③ Dimension increases 3" when hoist is equipped with screw type limit switch.

* Estimated wheel load per one (1) wheel. Includes live and dead load impacts.

† For a Y80 add a "Y" prefix.

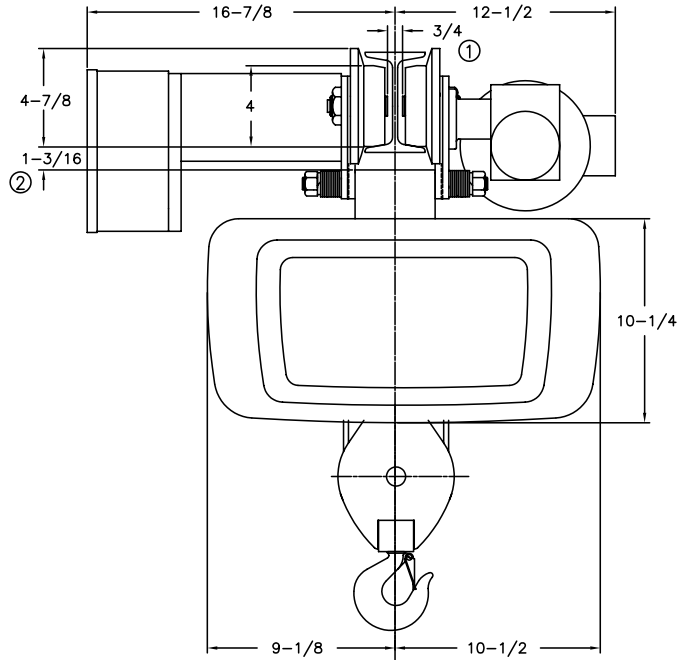
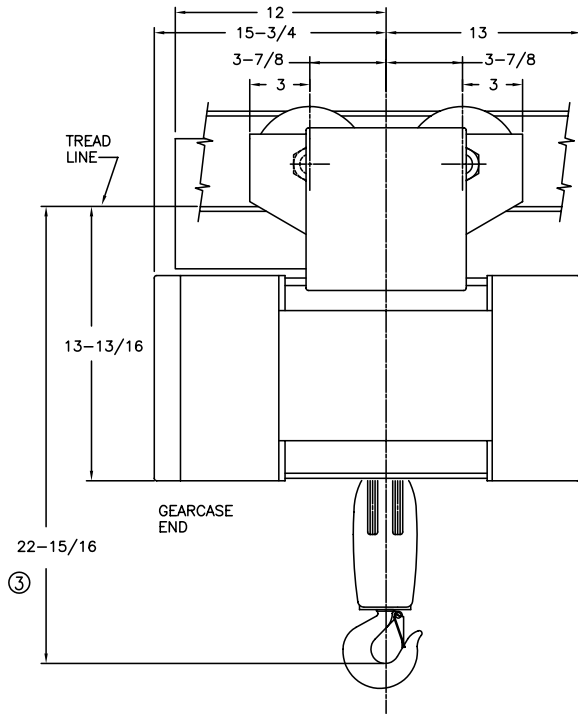
Double Reeved

1 Ton

ELECTRIC WIRE ROPE

Y80 - 800 Series

MOTOR DRIVEN TROLLEY



MINIMUM STANDARD RADIUS: 3'-6"

CATALOG NUMBER	HOIST				TROLLEY		WEIGHT (LBS)	ESTIMATED WHEEL LOAD* (LBS)
	MAX LIFT (FT)	HOIST SPEED (FPM)	HP	ROPE NO & DIA	SPEED (FPM)	HP		
†80M01-034D18-1	34	18	2	4/2-3/16	50	1/4	385	681
†80M01-034D18-2	34	18/6	2/.66	4/2-3/16	50	1/4	420	691
†80M01-034D28-1	34	28	2	4/2-3/16	50	1/4	415	694
†80M01-034D28-2	34	28/9.4	2/.66	4/2-3/16	50	1/4	420	696
†80M01-034D50-1	34	50	4	4/2-3/16	50	1/4	415	734
†80M01-034D50-2	34	50/25	4/2	4/2-3/16	50	1/4	420	736

Weights shown are for standard hoists listed. For approximate shipping weights, add 110 lbs. to the net weight given. Consult factory for weights of special hoists. Dimensions shown are in inches unless otherwise noted.

When used on smallest I-beam size, beam must be free of all obstructions, such as clips, suspension bolts, and nuts. Trolleys for wide flange beams refer to Optional Equipment.

Trolley beam size range – beam flange width 3" min., 5" max; beam depth 6" min. standard, 5-1/8"-7-1/4" with 1st extension, 7-1/2"-9-1/8" with 2nd extension. See Optional Price section for extension pricing.

① Occurs on smallest beam size only. On larger beams, it is increased by the difference in flange width.

② Clearance shown is between lug and wheel tread.

③ Dimension increases 3" when hoist is equipped with screw type limit switch.

* Estimated wheel load per one (1) wheel. Includes live and dead load impacts.

† For a Y80 add a "Y" prefix.

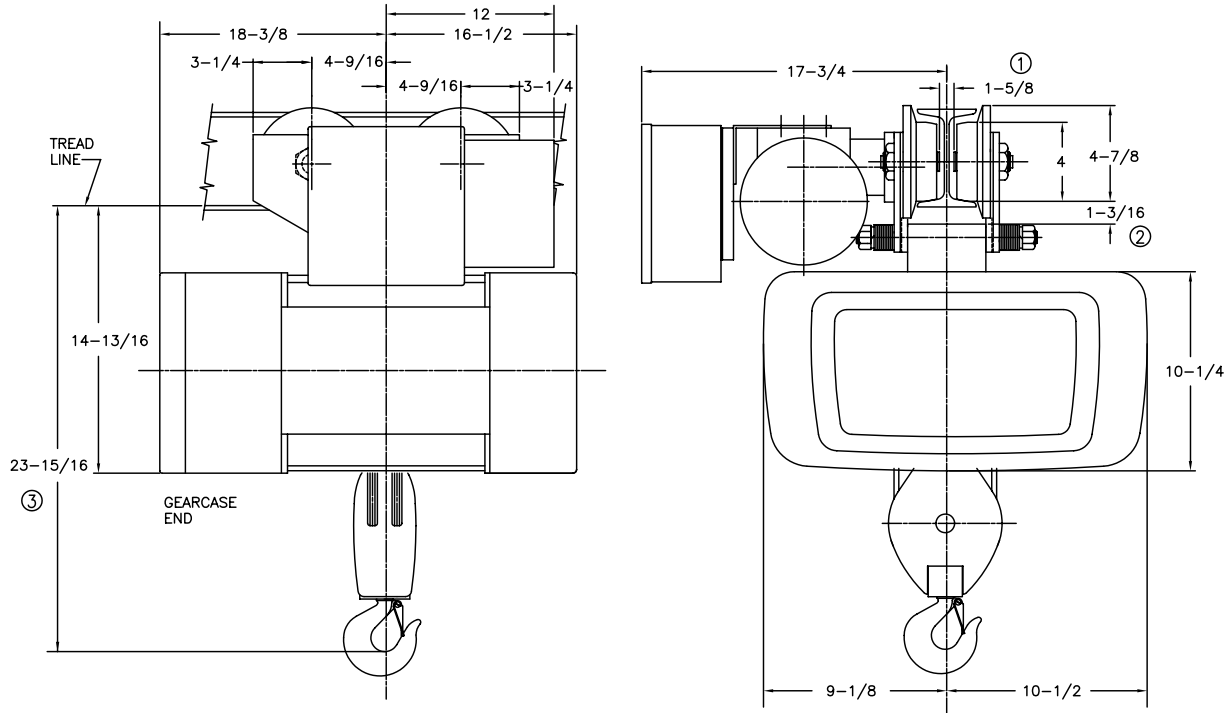
Double Reeved

1 Ton

ELECTRIC WIRE ROPE

Y80 - 800 Series

MOTOR DRIVEN TROLLEY



MINIMUM STANDARD RADIUS: 5'-0"

CATALOG NUMBER	HOIST				TROLLEY		WEIGHT (LBS)	ESTIMATED WHEEL LOAD* (LBS)
	MAX LIFT (FT)	HOIST SPEED (FPM)	HP	ROPE NO & DIA	SPEED (FPM)	HP		
†80M01-047D18-1	47	18	2	4/2-3/16	50	1/4	495	711
†80M01-047D18-2	47	18/6	2/.66	4/2-3/16	50	1/4	540	724
†80M01-047D28-1	47	28	2	4/2-3/16	50	1/4	525	724
†80M01-047D28-2	47	28/9.4	2/.66	4/2-3/16	50	1/4	540	729
†80M01-047D50-1	47	50	4	4/2-3/16	50	1/4	525	764
†80M01-047D50-2	47	50/25	4/2	4/2-3/16	50	1/4	540	769

Weights shown are for standard hoists listed. For approximate shipping weights, add 110 lbs. to the net weight given. Consult factory for weights of special hoists. Dimensions shown are in inches unless otherwise noted.

When used on smallest I-beam size, beam must be free of all obstructions, such as clips, suspension bolts, and nuts. Trolleys for wide flange beams refer to Optional Equipment.

Trolley beam size range – beam flange width 3-5/8" min., 6" max; beam depth 6" min. standard, 6-1/4"-8-5/8" with 1st extension, 8-3/4"-11" with 2nd extension. See Optional Price section for extension pricing.

① Occurs on smallest beam size only. On larger beams, it is increased by the difference in flange width.

② Clearance shown is between lug and wheel tread.

③ Dimension increases 3" when hoist is equipped with screw type limit switch.

* Estimated wheel load per one (1) wheel. Includes live and dead load impacts.

† For a Y80 add a "Y" prefix.

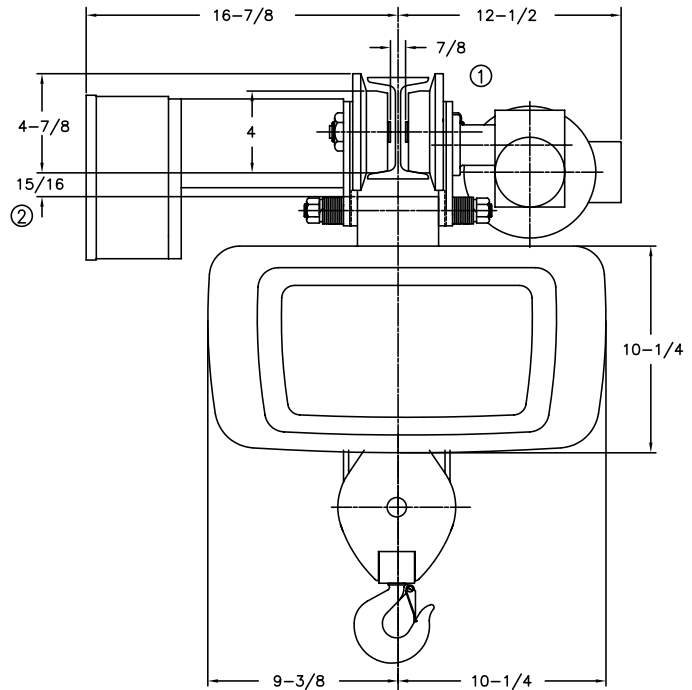
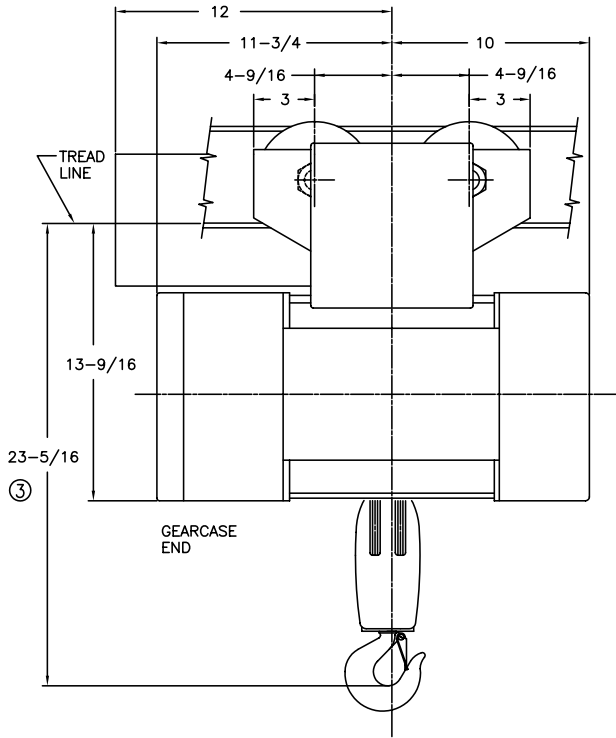
Double Reeved

2 Ton

ELECTRIC WIRE ROPE

Y80 - 800 Series

MOTOR DRIVEN TROLLEY



MINIMUM STANDARD RADIUS: 5'-0"

CATALOG NUMBER	HOIST				TROLLEY		WEIGHT (LBS)	ESTIMATED WHEEL LOAD* (LBS)
	MAX LIFT (FT)	HOIST SPEED (FPM)	HP	ROPE NO & DIA	SPEED (FPM)	HP		
†80M02-014D14-1	14	14	2	4/2-1/4	60	1/4	385	1256
†80M02-014D14-2	14	14/4.66	2/.66	4/2-1/4	60	1/4	400	1260
†80M02-014D28-1	14	28	4	4/2-1/4	60	1/4	385	1256
†80M02-014D28-2	14	28/14	4/2	4/2-1/4	60	1/4	400	1260

Weights shown are for standard hoists listed. For approximate shipping weights, add 110 lbs. to the net weight given. Consult factory for weights of special hoists. Dimensions shown are in inches unless otherwise noted,

When used on smallest I-beam size, beam must be free of all obstructions, such as clips, suspension bolts, and nuts. Trolleys for wide flange beams refer to Optional Equipment.

Trolley beam size range – beam flange width 3-5/8" min., 6" max; beam depth 6" min. standard, 6-1/4"-8-5/8" with 1st extension, 8-7/8"-11-1/4" with 2nd extension. See Optional Price section for extension pricing.

① Occurs on smallest beam size only. On larger beams, it is increased by the difference in flange width.

② Clearance shown is between lug and wheel tread.

③ Dimension increases 3" when hoist is equipped with screw type limit switch.

* Estimated wheel load per one (1) wheel. Includes live and dead load impacts.

† For a Y80 add a "Y" prefix.

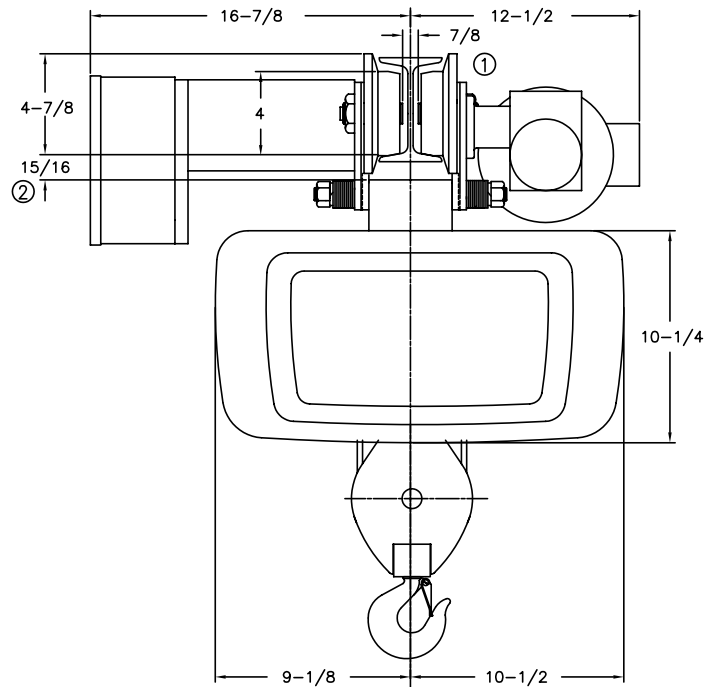
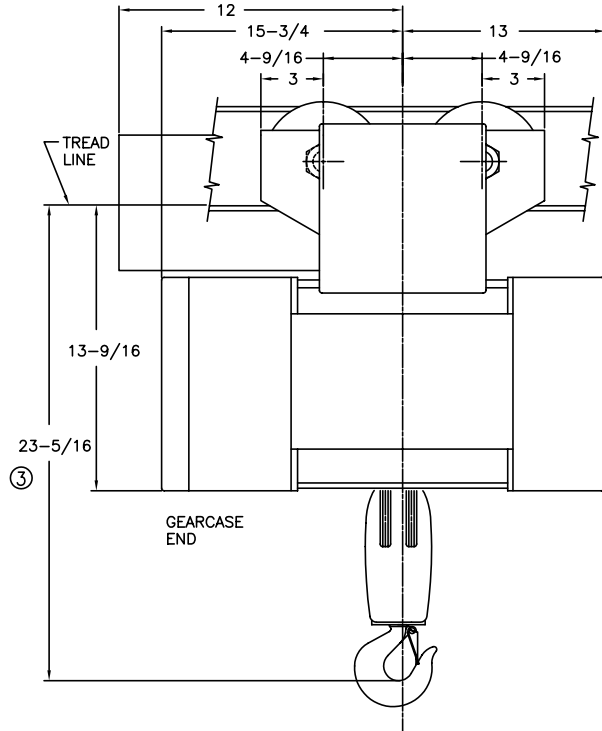
Double Reeved

2 Ton

ELECTRIC WIRE ROPE

Y80 - 800 Series

MOTOR DRIVEN TROLLEY



MINIMUM STANDARD RADIUS: 5'-0"

CATALOG NUMBER	HOIST				TROLLEY		WEIGHT (LBS)	ESTIMATED WHEEL LOAD* (LBS)
	MAX LIFT (FT)	HOIST SPEED (FPM)	HP	ROPE NO & DIA	SPEED (FPM)	HP		
†80M02-025D14-1	25	14	2	4/2-1/4	60	1/4	410	1263
†80M02-025D14-2	25	14/4.66	2/.66	4/2-1/4	60	1/4	425	1267
†80M02-025D28-1	25	28	4	4/2-1/4	60	1/4	410	1263
†80M02-025D28-2	25	28/14	4/2	4/2-1/4	60	1/4	425	1267

Weights shown are for standard hoists listed. For approximate shipping weights, add 110 lbs. to the net weight given. Consult factory for weights of special hoists. Dimensions shown are in inches unless otherwise noted.

When used on smallest I-beam size, beam must be free of all obstructions, such as clips, suspension bolts, and nuts. Trolleys for wide flange beams refer to Optional Equipment.

Trolley beam size range – beam flange width 3-5/8" min., 6" max; beam depth 6" min. standard, 6-1/4"-8-5/8" with 1st extension, 8-7/8"-11-1/4" with 2nd extension. See Optional Price section for extension pricing.

① Occurs on smallest beam size only. On larger beams, it is increased by the difference in flange width.

② Clearance shown is between lug and wheel tread.

③ Dimension increases 3" when hoist is equipped with screw type limit switch.

* Estimated wheel load per one (1) wheel. Includes live and dead load impacts.

† For a Y80 add a "Y" prefix.

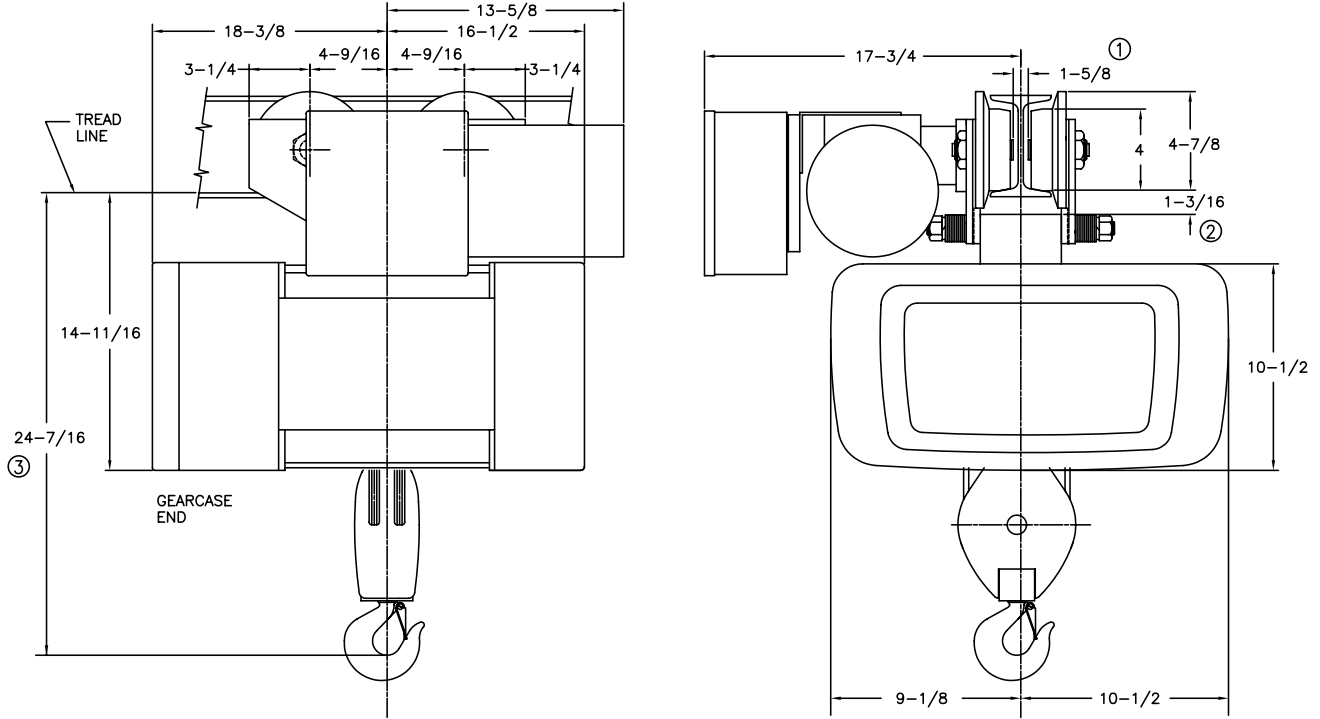
Double Reeved

2 Ton

ELECTRIC WIRE ROPE

Y80 - 800 Series

MOTOR DRIVEN TROLLEY



MINIMUM STANDARD RADIUS: 5'-0"

CATALOG NUMBER	HOIST				TROLLEY		WEIGHT (LBS)	ESTIMATED WHEEL LOAD* (LBS)
	MAX LIFT (FT)	HOIST SPEED (FPM)	HP	ROPE NO & DIA	SPEED (FPM)	HP		
†80M02-036D14-1	36	14	2	4/2-1/4	50	1/4	525	1294
†80M02-036D14-2	36	14/4.66	2/.66	4/2-1/4	50	1/4	540	1299
†80M02-036D28-1	36	28	4	4/2-1/4	50	1/4	525	1294
†80M02-036D28-2	36	28/14	4/2	4/2-1/4	50	1/4	540	1299

Weights shown are for standard hoists listed. For approximate shipping weights, add 110 lbs. to the net weight given. Consult factory for weights of special hoists. Dimensions shown are in inches unless otherwise noted.

When used on smallest I-beam size, beam must be free of all obstructions, such as clips, suspension bolts, and nuts. Trolleys for wide flange beams refer to Optional Equipment.

Trolley beam size range – beam flange width 4" min., 6-1/4" max; beam depth 6" min. standard, 6-3/8"-8-5/8" with 1st extension, 8-3/4"-11" with 2nd extension. See Optional Price section for extension pricing.

① Occurs on smallest beam size only. On larger beams, it is increased by the difference in flange width.

② Clearance shown is between lug and wheel tread.

③ Dimension increases 3" when hoist is equipped with screw type limit switch.

* Estimated wheel load per one (1) wheel. Includes live and dead load impacts.

† For a Y80 add a "Y" prefix.

Standard Features

Dimensions & Specifications

AIR WIRE ROPE

Y80 - 800 Series

Single Reeved Air Hoists with Motor Driven Trolleys

Feature	1 Ton	2 Ton	3 Ton	5 Ton
Service Class	H-4	H-4	H-4	H-4
Reeved	2 PS - 1/4"	2 PS - 5/16"	4 PS - 5/16"	6 PS - 5/16"
Hoist Gearing	Triple reduction Helical/Spur	Triple reduction Helical/Spur	Triple reduction Helical/Spur	Triple reduction Helical/Spur
Hook Assembly	Bearing Thrust Washer 360 degree rotate	Bearing Thrust Washer 360 degree rotate	Bearing-mounted 360 degree rotate	Bearing-mounted 360 degree rotate
Hoist Motor	Vane-type Air Motor	Vane-type Air Motor	Vane-type Air Motor	Vane-type Air Motor
Hoist Motor Brake	Optional Air-Operated	Optional Air-Operated	Optional Air-Operated	Optional Air-Operated
Load Brake	Weston type Roller Ratchet	Weston type Roller Ratchet	Weston type Roller Ratchet	Weston type Roller Ratchet
Hoist Control	Variable Speed	Variable Speed	Variable Speed	Variable Speed
Hoist Limit Switch	Upper block control circuit	Upper block control circuit	Upper block control circuit	Upper block control circuit
Rope Drum Diameter	7-1/2"	7-1/2"	7-1/2"	7-1/2"
Rope Drum Material	Cast Iron	Cast Iron	Cast Iron	Cast Iron
Sheave Diameter	5"	6"	6"	6"
Sheave Material	Steel	Steel	Steel	Steel
Trolley Gearing	Worm	Worm	Worm	Worm
Trolley Motor	Vane-type Air Motor	Vane-type Air Motor	Vane-type Air Motor	Vane-type Air Motor
Trolley Control	Variable Speed	Variable Speed	Variable Speed	Variable Speed
Wheels	4"	4"	4" for 45' lift 6-1/2" for 30' lift	6-1/2"
Bumpers	Optional Rubber	Optional Rubber	Optional Rubber	Optional Rubber
Bearings	Anti-friction	Anti-friction	Anti-friction	Anti-friction

Air Motor Data: Hoist = 90 PSI @ 110-125 Scfm - 3/4" NPT air inlet

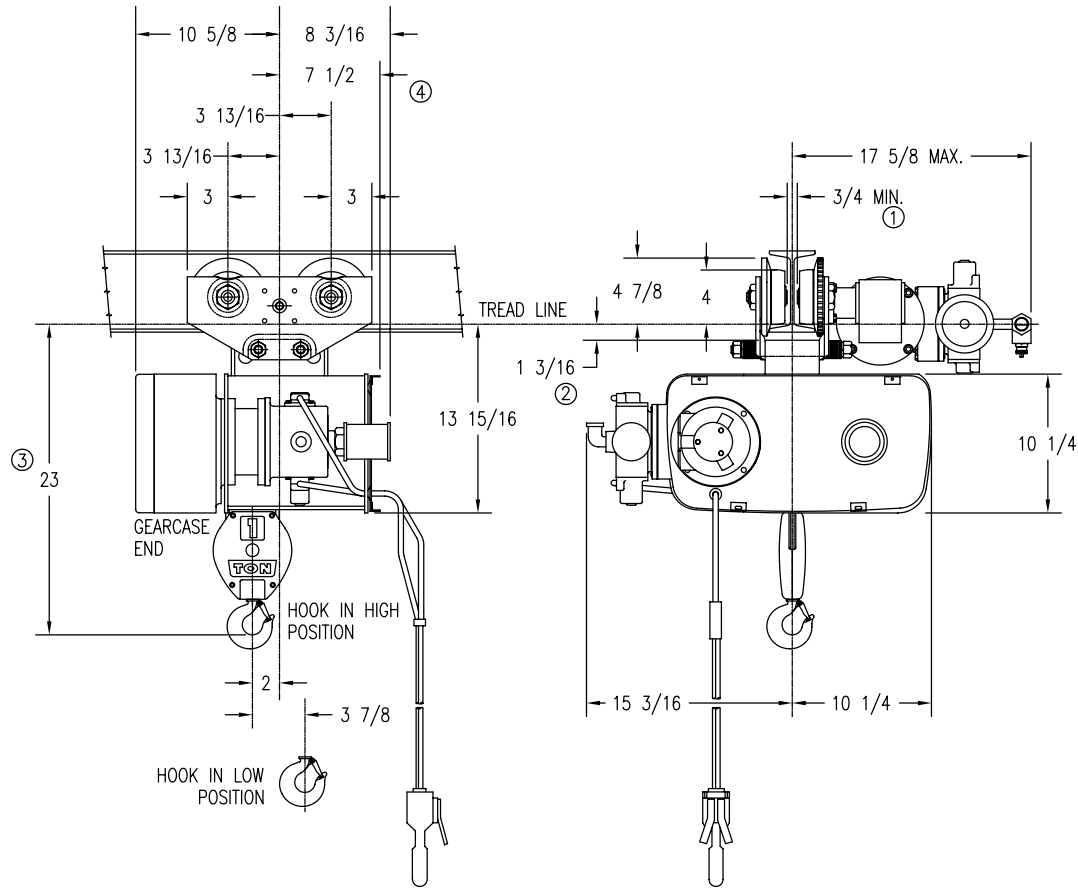
Single Reeved

1 Ton

AIR WIRE ROPE

Y80 - 800 Series

MOTOR DRIVEN TROLLEY



MINIMUM STANDARD RADIUS: 4'-0", FOR SMALLER RADIUS CONTACT FACTORY

CATALOG NUMBER	HOIST				TROLLEY		WEIGHT (LBS)	ESTIMATED WHEEL LOAD*	
	MAX LIFT (FT)	HOIST SPEED (FPM)	MOTOR SIZE	ROPE NO & DIA	SPEED (FPM)	MOTOR SIZE		HIGH HOOK (LBS)	LOW HOOK (LBS)
†80M01-025S33-A	25	33	A	2-1/4	75	A	310	968	950

Weights shown are for standard hoists listed. For approximate shipping weights, add 110 lbs. to the net weight given. Consult factory for weights of special hoists. Dimensions shown are in inches unless otherwise noted.

When used on smallest I-beam size, beam must be free of all obstructions, such as clips, suspension bolts, and nuts. Trolleys for wide flange beams refer to Optional Equipment.

Trolley beam size range – beam flange width 3" min., 5" max; beam depth 6" min. standard, 5-1/8"-7-1/4" with 1st extension, 7-1/2"-9-1/8" with 2nd extension. See Optional Price section for extension pricing.

① Occurs on smallest beam size only. On larger beams, it is increased by the difference in flange width.

② Clearance shown is between lug and wheel tread.

③ Dimension increases 3" when hoist is equipped with screw type limit switch.

④ Dimension increases 4" when hoist is equipped with screw type limit switch.

* Estimated wheel load per one (1) wheel. Includes live and dead load impacts.

† For a Y80 add a "Y" prefix.

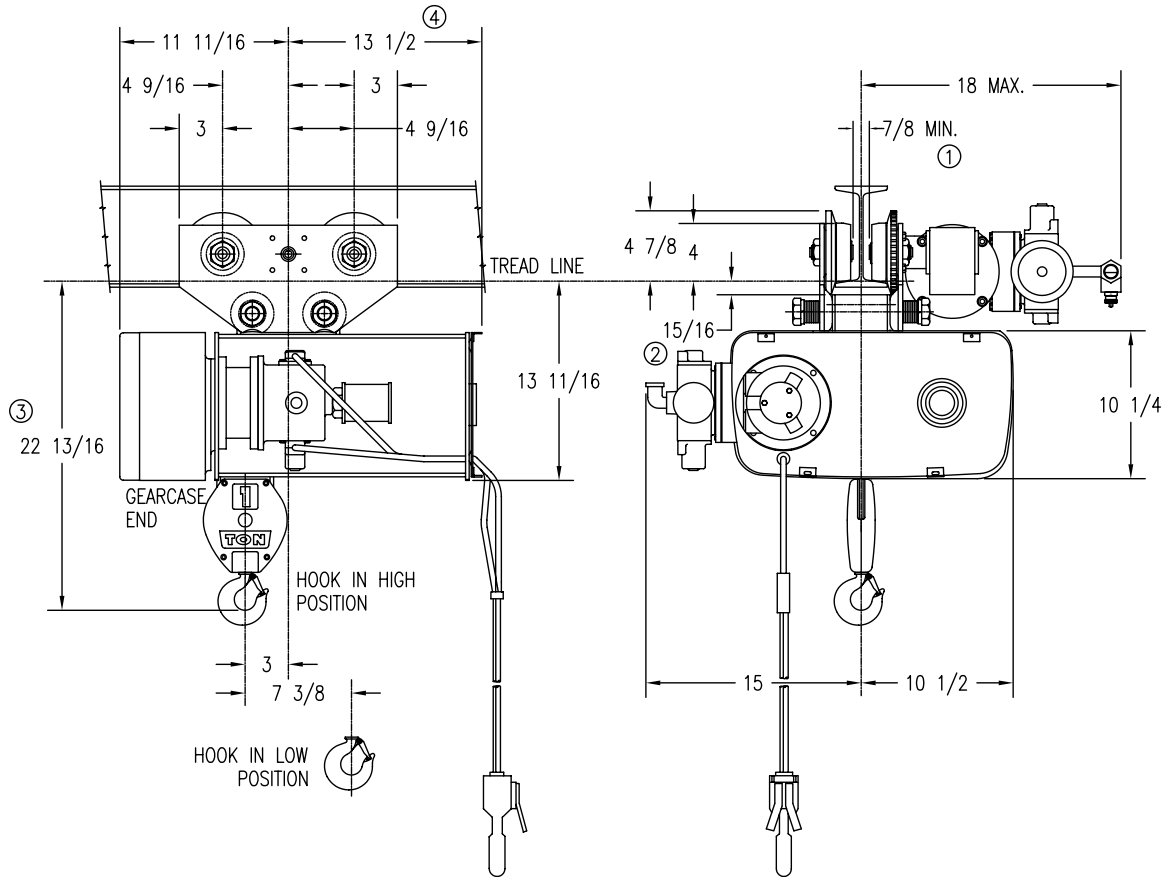
Single Reeved

1 Ton

AIR WIRE ROPE

Y80 - 800 Series

MOTOR DRIVEN TROLLEY



MINIMUM STANDARD RADIUS: 5'-0". FOR SMALLER RADIUS CONTACT FACTORY

CATALOG NUMBER	HOIST				TROLLEY		WEIGHT (LBS)	ESTIMATED WHEEL LOAD*	
	MAX LIFT (FT)	HOIST SPEED (FPM)	MOTOR SIZE	ROPE NO & DIA	SPEED (FPM)	MOTOR SIZE		HIGH HOOK (LBS)	LOW HOOK (LBS)
†80M01-050S33-A	50	33	A	2-1/4	60	A	415	1074	1248

Weights shown are for standard hoists listed. For approximate shipping weights, add 110 lbs. to the net weight given. Consult factory for weights of special hoists. Dimensions shown are in inches unless otherwise noted.

When used on smallest I-beam size, beam must be free of all obstructions, such as clips, suspension bolts, and nuts. Trolleys for wide flange beams refer to Optional Equipment.

Trolley beam size range – beam flange width 3-5/8" min., 6" max; beam depth 7" min. standard, 6-1/4"-8-5/8" with 1st extension, 8-7/8"-11-1/4" with 2nd extension. See Optional Price section for extension pricing.

① Occurs on smallest beam size only. On larger beams, it is increased by the difference in flange width.

② Clearance shown is between lug and wheel tread.

③ Dimension increases 3" when hoist is equipped with screw type limit switch.

④ Dimension increases 4" when hoist is equipped with screw type limit switch.

* Estimated wheel load per one (1) wheel. Includes live and dead load impacts.

† For a Y80 add a "Y" prefix.

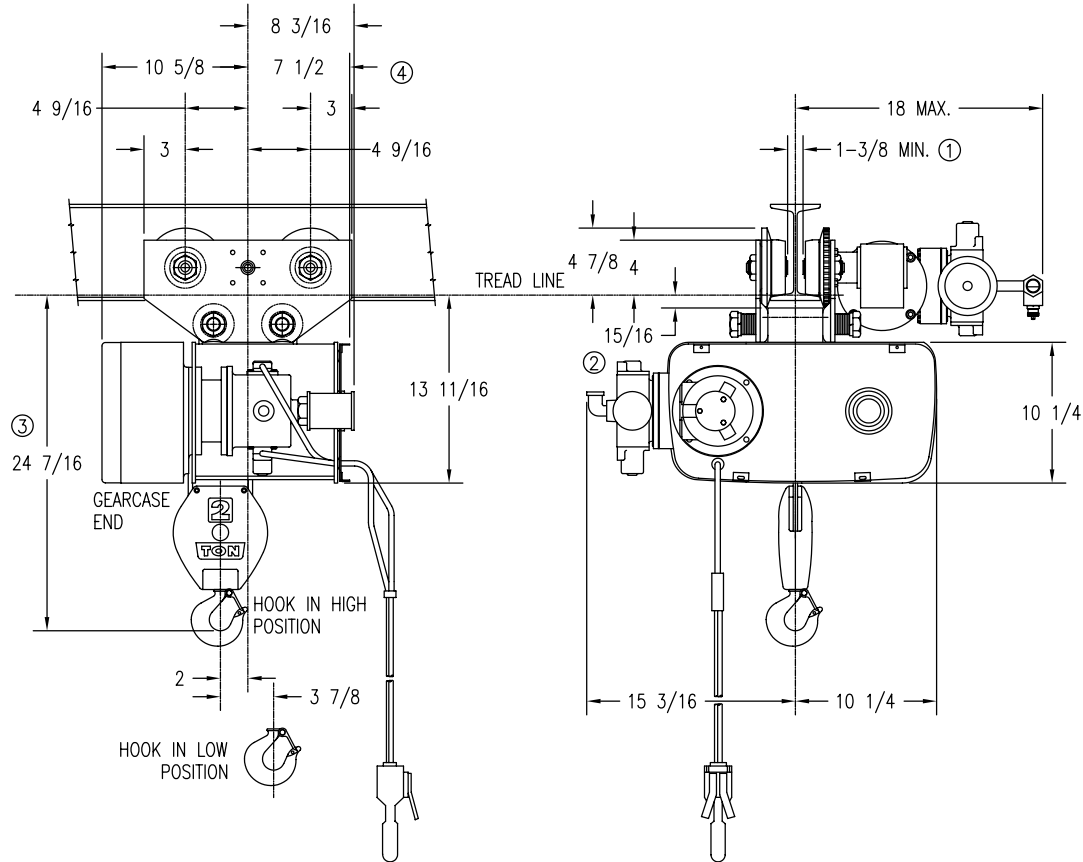
Single Reeved

2 Ton

AIR WIRE ROPE

Y80 - 800 Series

MOTOR DRIVEN TROLLEY



MINIMUM STANDARD RADIUS: 5'-0", FOR SMALLER RADIUS CONTACT FACTORY

CATALOG NUMBER	HOIST				TROLLEY		WEIGHT (LBS)	ESTIMATED WHEEL LOAD*	
	MAX LIFT (FT)	HOIST SPEED (FPM)	MOTOR SIZE	ROPE NO & DIA	SPEED (FPM)	MOTOR SIZE		HIGH HOOK (LBS)	LOW HOOK (LBS)
†80M02-020S16-A	20	16	A	2-5/16	60	A	385	1753	1722

Weights shown are for standard hoists listed. For approximate shipping weights, add 110 lbs. to the net weight given. Consult factory for weights of special hoists. Dimensions shown are in inches unless otherwise noted.

When used on smallest I-beam size, beam must be free of all obstructions, such as clips, suspension bolts, and nuts. Trolleys for wide flange beams refer to Optional Equipment.

Trolley beam size range – beam flange width 3-5/8" min., 6" max; beam depth 7" min. standard, 6-1/4"-8-5/8" with 1st extension, 8-7/8"-11-1/4" with 2nd extension. See Optional Price section for extension pricing.

- ① Occurs on smallest beam size only. On larger beams, it is increased by the difference in flange width.
- ② Clearance shown is between lug and wheel tread.
- ③ Dimension increases 3" when hoist is equipped with screw type limit switch.
- ④ Dimension increases 4" when hoist is equipped with screw type limit switch.

* Estimated wheel load per one (1) wheel. Includes live and dead load impacts.

† For a Y80 add a "Y" prefix.

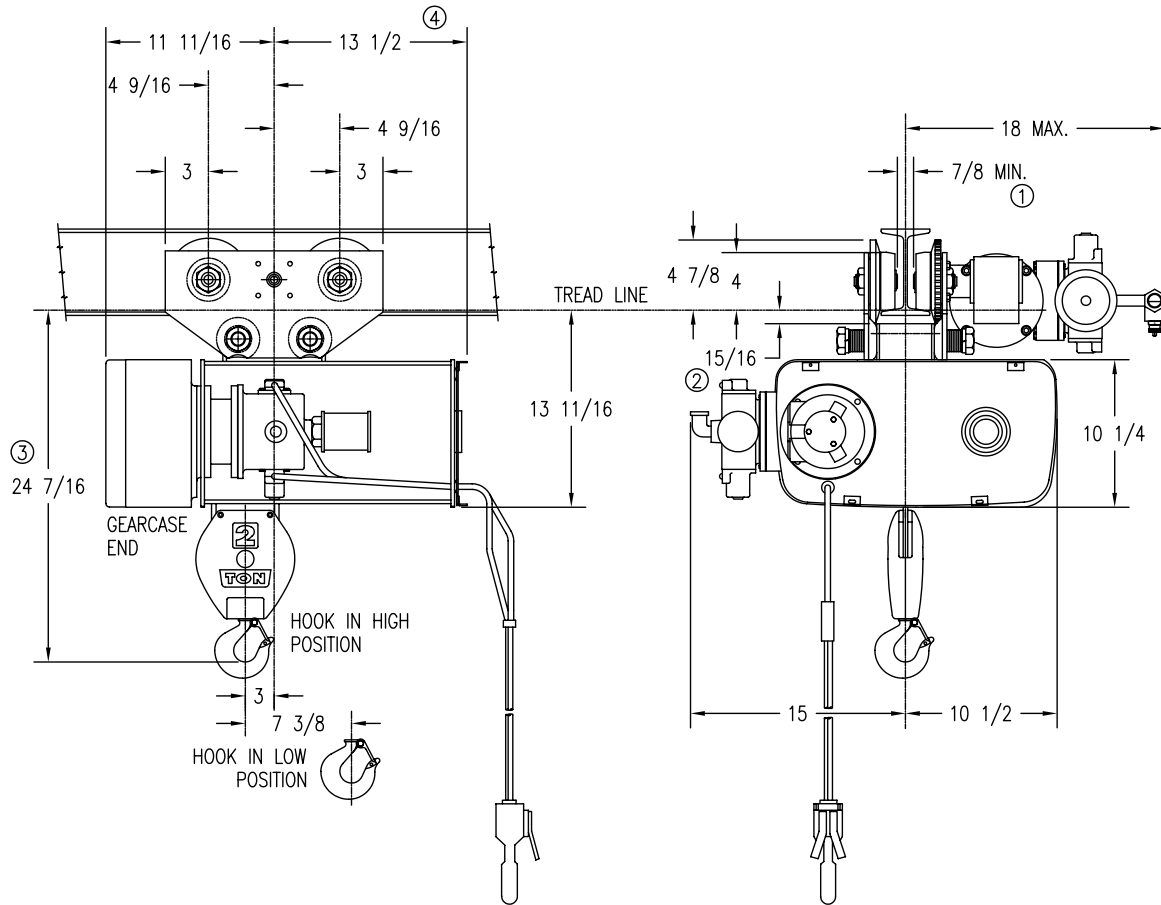
Single Reeved

2 Ton

AIR WIRE ROPE

Y80 - 800 Series

MOTOR DRIVEN TROLLEY



MINIMUM STANDARD RADIUS: 5'-0", FOR SMALLER RADIUS CONTACT FACTORY

CATALOG NUMBER	HOIST				TROLLEY		WEIGHT (LBS)	ESTIMATED WHEEL LOAD*	
	MAX LIFT (FT)	HOIST SPEED (FPM)	MOTOR SIZE	ROPE NO & DIA	SPEED (FPM)	MOTOR SIZE		HIGH HOOK (LBS)	LOW HOOK (LBS)
†80M02-040S16-A	40	16	A	2-5/16	60	A	425	2013	2355

Weights shown are for standard hoists listed. For approximate shipping weights, add 110 lbs. to the net weight given. Consult factory for weights of special hoists. Dimensions shown are in inches unless otherwise noted.

When used on smallest I-beam size, beam must be free of all obstructions, such as clips, suspension bolts, and nuts. Trolleys for wide flange beams refer to Optional Equipment.

Trolley beam size range – beam flange width 3-5/8" min., 6" max; beam depth 7" min. standard, 6-1/4"-8-5/8" with 1st extension, 8-7/8"-11-1/4" with 2nd extension. See Optional Price section for extension pricing.

- ① Occurs on smallest beam size only. On larger beams, it is increased by the difference in flange width.
- ② Clearance shown is between lug and wheel tread.
- ③ Dimension increases 3" when hoist is equipped with screw type limit switch.
- ④ Dimension increases 4" when hoist is equipped with screw type limit switch.

* Estimated wheel load per one (1) wheel. Includes live and dead load impacts.

† For a Y80 add a "Y" prefix.

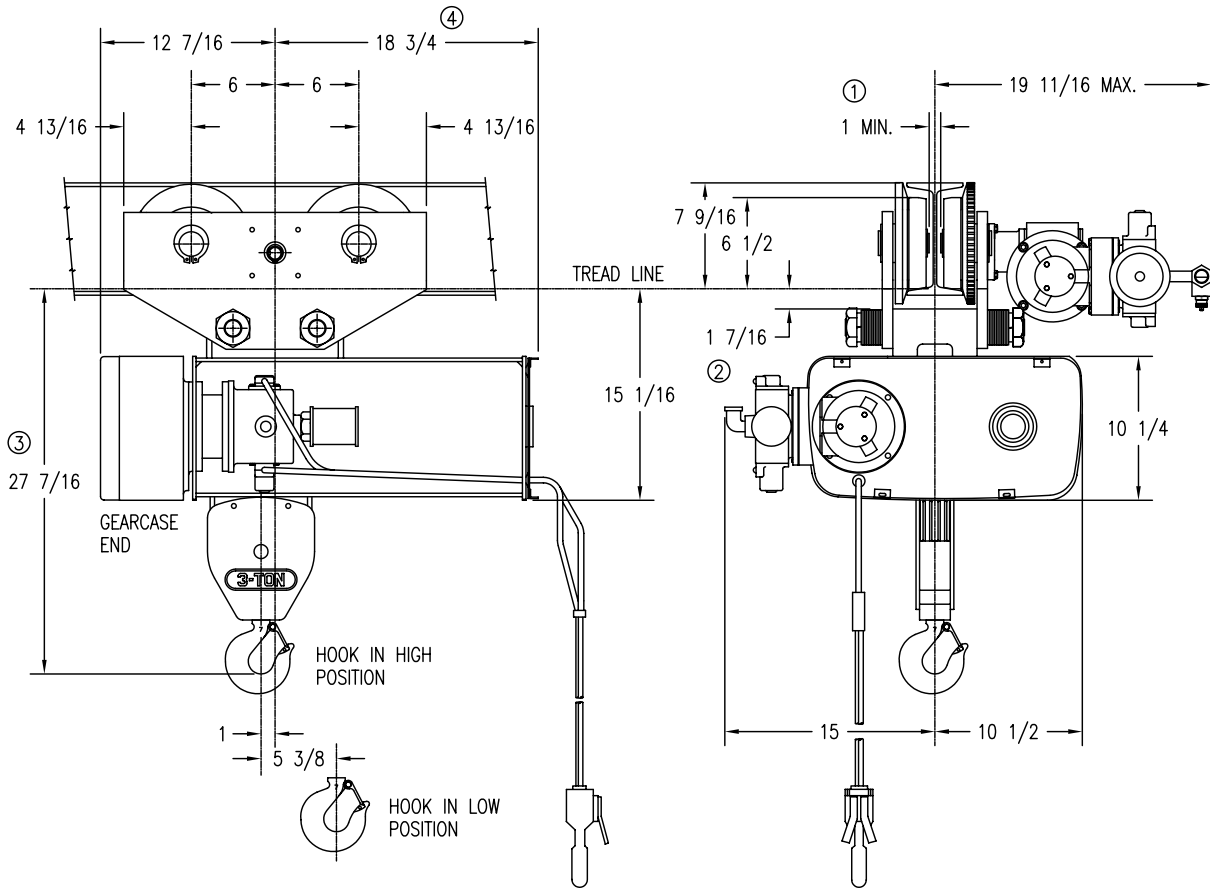
Single Reeved

3 Ton

AIR WIRE ROPE

Y80 - 800 Series

MOTOR DRIVEN TROLLEY



MINIMUM STANDARD RADIUS: 7'-0", FOR SMALLER RADIUS CONTACT FACTORY

CATALOG NUMBER	HOIST				TROLLEY		WEIGHT (LBS)	EST. TROLLEY WHEEL LOAD*	
	MAX LIFT (FT)	HOIST SPEED (FPM)	MOTOR SIZE	ROPE NO & DIA	SPEED (FPM)	MOTOR SIZE		HIGH HOOK (LBS)	LOW HOOK (LBS)
†80M03-030S11-A	30	11	A	4-5/16	50	A	635	2196	3148

Weights shown are for standard hoists listed. For approximate shipping weights, add 110 lbs. to the net weight given. Consult factory for weights of special hoists. Dimensions shown are in inches unless otherwise noted.

When used on smallest I-beam size, beam must be free of all obstructions, such as clips, suspension bolts, and nuts. Trolleys for wide flange beams refer to Optional Equipment.

Trolley beam size range – beam flange width 4" min., 6-1/4" max; beam depth 8" min. standard, 6-3/8"-8-5/8" with 1st extension, 8-3/4"-11" with 2nd extension. See Optional Price section for extension pricing.

① Occurs on smallest beam size only. On larger beams, it is increased by the difference in flange width.

② Clearance shown is between lug and wheel tread.

③ Dimension increases 3" when hoist is equipped with screw type limit switch.

④ Dimension increases 4" when hoist is equipped with screw type limit switch.

* Estimated wheel load per one (1) wheel. Includes live and dead load impacts.

† For a Y80 add a "Y" prefix.

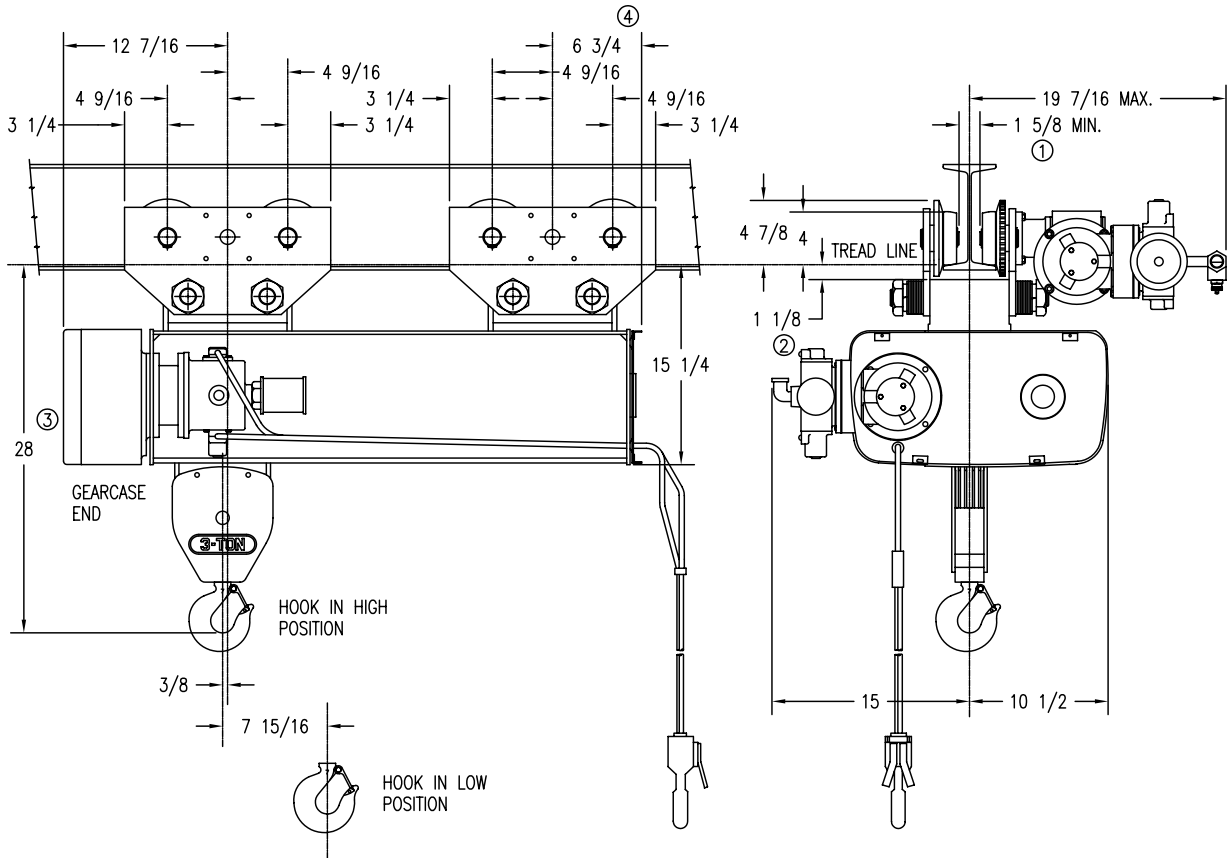
Single Reeved

3 Ton

AIR WIRE ROPE

Y80 - 800 Series

MOTOR DRIVEN TROLLEY



MINIMUM RADIUS: Straight Track ⑤

CATALOG NUMBER	HOIST				TROLLEY		WEIGHT (LBS)	EST. TROLLEY WHEEL LOAD*	
	MAX LIFT (FT)	HOIST SPEED (FPM)	MOTOR SIZE	ROPE NO & DIA	SPEED (FPM)	MOTOR SIZE		HIGH HOOK (LBS)	LOW HOOK (LBS)
†80M03-045S11-A	45	11	A	4-5/16	50	A	755	1839	1316

Weights shown are for standard hoists listed. For approximate shipping weights, add 110 lbs. to the net weight given. Consult factory for weights of special hoists. Dimensions shown are in inches unless otherwise noted.

When used on smallest I-beam size, beam must be free of all obstructions, such as clips, suspension bolts, and nuts. Trolleys for wide flange beams refer to Optional Equipment.

Trolley beam size range – beam flange width 4" min., 6-1/4" max; beam depth 8" min. standard, 6-3/8"-8-5/8" with 1st extension, 8-3/4"-11" with 2nd extension. See Optional Price section for extension pricing.

- ① Occurs on smallest beam size only. On larger beams, it is increased by the difference in flange width.
- ② Clearance shown is between lug and wheel tread.
- ③ Dimension increases 3" when hoist is equipped with screw type limit switch.
- ④ Dimension increases 4" when hoist is equipped with screw type limit switch.
- ⑤ Can negotiate curves with addition of swivel trolley from the option pricing section. Headroom increases by 4-5/8".

* Estimated wheel load per one (1) wheel. Includes live and dead load impacts.

† For a Y80 add a "Y" prefix.

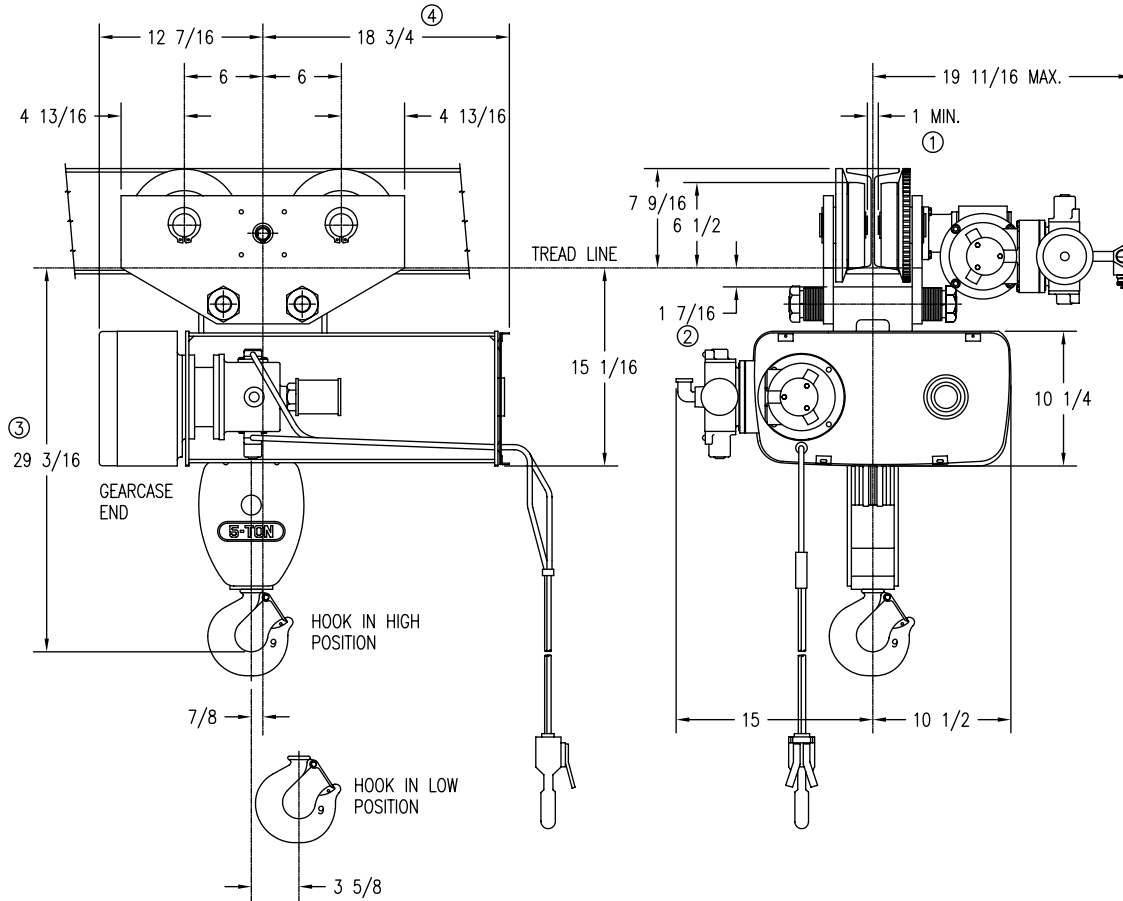
Single Reeved

5 Ton

AIR WIRE ROPE

Y80 - 800 Series

MOTOR DRIVEN TROLLEY



MINIMUM STANDARD RADIUS: 7'-0". FOR SMALLER RADIUS CONTACT FACTORY

CATALOG NUMBER	HOIST				TROLLEY		WEIGHT (LBS)	ESTIMATED WHEEL LOAD*	
	MAX LIFT (FT)	HOIST SPEED (FPM)	MOTOR SIZE	ROPE NO & DIA	SPEED (FPM)	MOTOR SIZE		HIGH HOOK (LBS)	LOW HOOK (LBS)
†80M05-020S07-A	20	07	A	6-5/16	50	A	655	3474	4373

Weights shown are for standard hoists listed. For approximate shipping weights, add 110 lbs. to the net weight given. Consult factory for weights of special hoists. Dimensions shown are in inches unless otherwise noted.

When used on smallest I-beam size, beam must be free of all obstructions, such as clips, suspension bolts, and nuts. Trolleys for wide flange beams refer to Optional Equipment.

Trolley beam size range – beam flange width 4" min., 6-1/4" max; beam depth 8" min. standard, 6-3/8"-8-5/8" with 1st extension, 8-3/4"-11" with 2nd extension. See Optional Price section for extension pricing.

① Occurs on smallest beam size only. On larger beams, it is increased by the difference in flange width.

② Clearance shown is between lug and wheel tread.

③ Dimension increases 3" when hoist is equipped with screw type limit switch.

④ Dimension increases 4" when hoist is equipped with screw type limit switch.

* Estimated wheel load per one (1) wheel. Includes live and dead load impacts.

† For a Y80 add a "Y" prefix.

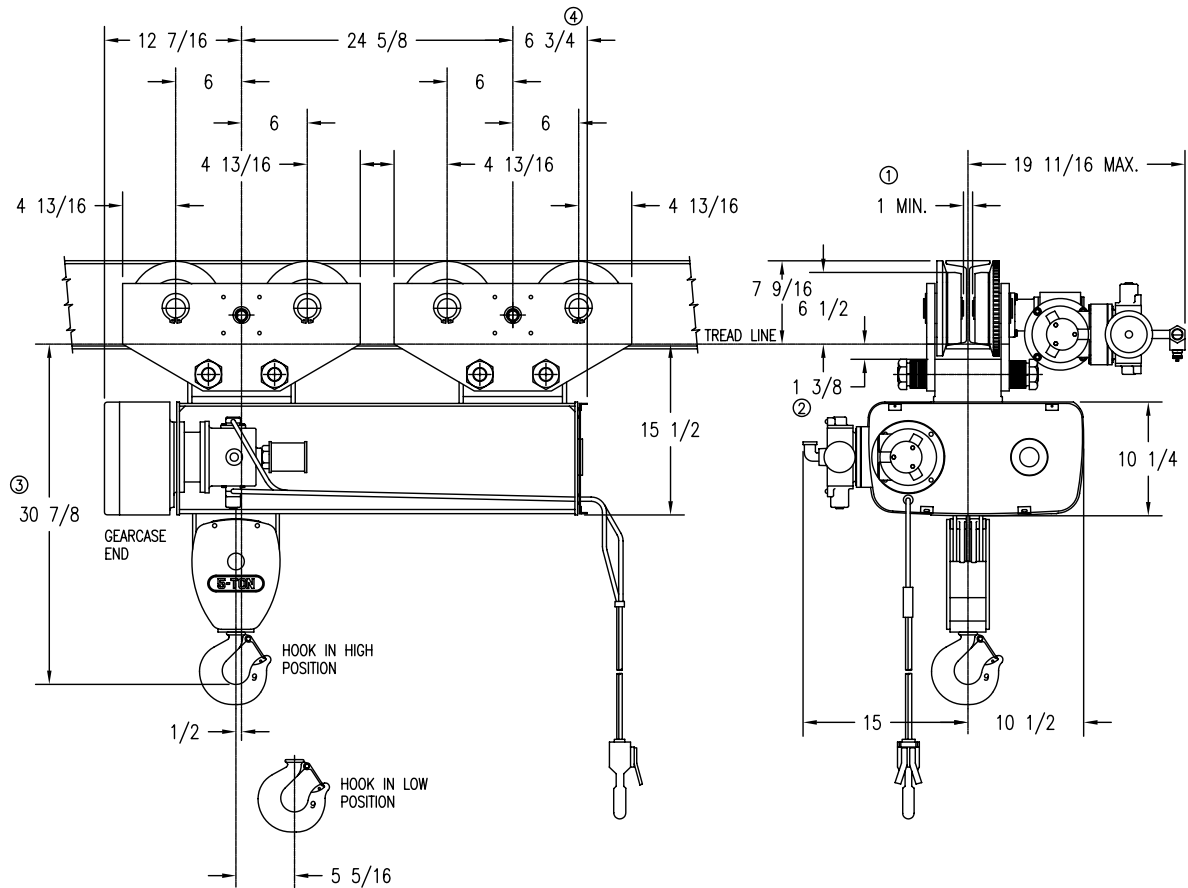
Single Reeved

5 Ton

AIR WIRE ROPE

Y80 - 800 Series

MOTOR DRIVEN TROLLEY



MINIMUM RADIUS: Straight Track ⑤

CATALOG NUMBER	HOIST				TROLLEY		WEIGHT (LBS)	ESTIMATED WHEEL LOAD*	
	MAX LIFT (FT)	HOIST SPEED (FPM)	MOTOR SIZE	ROPE NO & DIA	SPEED (FPM)	MOTOR SIZE		HIGH HOOK (LBS)	LOW HOOK (LBS)
†80M05-030S07-A	30	07	A	6-5/16	50	A	850	2992	2359

Weights shown are for standard hoists listed. For approximate shipping weights, add 110 lbs. to the net weight given. Consult factory for weights of special hoists. Dimensions shown are in inches unless otherwise noted.

When used on smallest I-beam size, beam must be free of all obstructions, such as clips, suspension bolts, and nuts. Trolleys for wide flange beams refer to Optional Equipment.

Trolley beam size range – beam flange width 4" min., 6-1/4" max; beam depth 8" min. standard, 6-3/8"-8-5/8" with 1st extension, 8-3/4"-11" with 2nd extension. See Optional Price section for extension pricing.

- ① Occurs on smallest beam size only. On larger beams, it is increased by the difference in flange width.
- ② Clearance shown is between lug and wheel tread.
- ③ Dimension increases 3" when hoist is equipped with screw type limit switch.
- ④ Dimension increases 4" when hoist is equipped with screw type limit switch.
- ⑤ Can negotiate curves with addition of swivel trolley from the option pricing section. Headroom increases by 4-5/8".

* Estimated wheel load per one (1) wheel. Includes live and dead load impacts.

† For a Y80 add a "Y" prefix.

Standard Features

Dimensions & Specifications

AIR WIRE ROPE

Y80 - 800 Series

Double Reeved Air Hoists with Motor Driven Trolleys

Feature	1 Ton	2 Ton
Service Class	H-4	H-4
Reeved	4 PD - 3/16"	4 PD - 1/4'
Hoist Gearing	Triple reduction Helical/Spur	Triple reduction Helical/Spur
Hook Assembly	Bearing Thrust Washer 360 degree rotate	Bearing Thrust Washer 360 degree rotate
Hoist Motor	Vane-type Air Motor	Vane-type Air Motor
Hoist Motor Brake	Optional Air- Operated	Optional Air- Operated
Hoist Control	Variable Speed	Variable Speed
Hoist Limit Switch	Upper block control circuit	Upper block control circuit
Rope Drum Diameter	7-1/2"	7-1/2"
Rope Drum Material	Cast Iron	Cast Iron
Sheave Diameter	5"	5"
Sheave Material	Steel	Steel
Trolley Gearing	Worm	Worm
Trolley Motor	Vane-type Air Motor	Vane-type Air Motor
Trolley Control	Variable Speed	Variable Speed
Wheels	4"	4"
Bumpers	Optional Rubber	Optional Rubber
Bearings	Anti-friction	Anti-friction

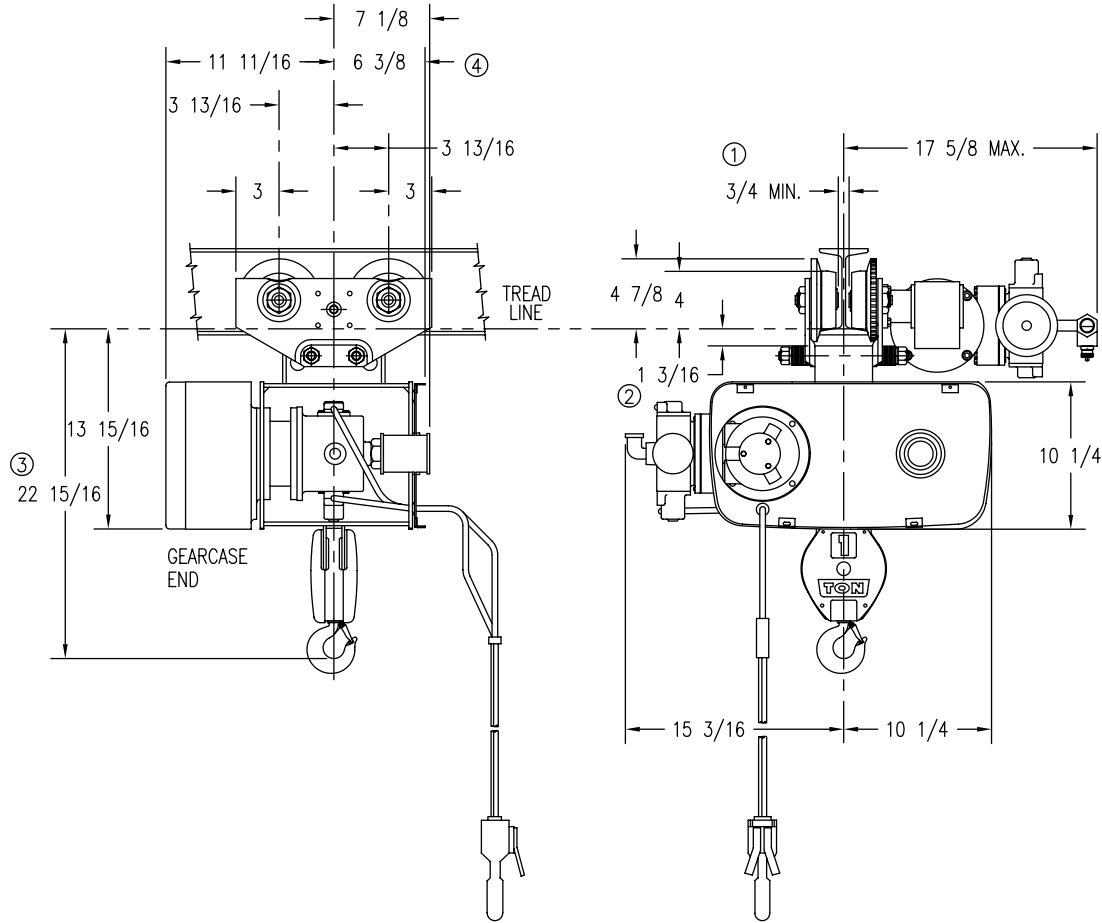
Double Reeved

1 Ton

AIR WIRE ROPE

Y80 - 800 Series

MOTOR DRIVEN TROLLEY



MINIMUM STANDARD RADIUS: 4'-0", FOR SMALLER RADIUS CONTACT FACTORY

CATALOG NUMBER	HOIST				TROLLEY		WEIGHT (LBS)	ESTIMATED WHEEL LOAD* (LBS)
	MAX LIFT (FT)	HOIST SPEED (FPM)	MOTOR SIZE	ROPE NO & DIA	SPEED (FPM)	MOTOR SIZE		
†80M01-018D33-A	18	33	A	4-3/16	75	A	310	668

Weights shown are for standard hoists listed. For approximate shipping weights, add 110 lbs. to the net weight given. Consult factory for weights of special hoists. Dimensions shown are in inches unless otherwise noted.

When used on smallest I-beam size, beam must be free of all obstructions, such as clips, suspension bolts, and nuts. Trolleys for wide flange beams refer to Optional Equipment.

Trolley beam size range – beam flange width 3" min., 5" max; beam depth 6" min. standard, 5-1/8"-7-1/4" with 1st extension, 7-1/2"-9-1/8" with 2nd extension. See Optional Price section for extension pricing.

- ① Occurs on smallest beam size only. On larger beams, it is increased by the difference in flange width.
- ② Clearance shown is between lug and wheel tread.
- ③ Dimension increases 3" when hoist is equipped with screw type limit switch.
- ④ Dimension increases 4" when hoist is equipped with screw type limit switch.

* Estimated wheel load per one (1) wheel. Includes live and dead load impacts.

† For a Y80 add a "Y" prefix.

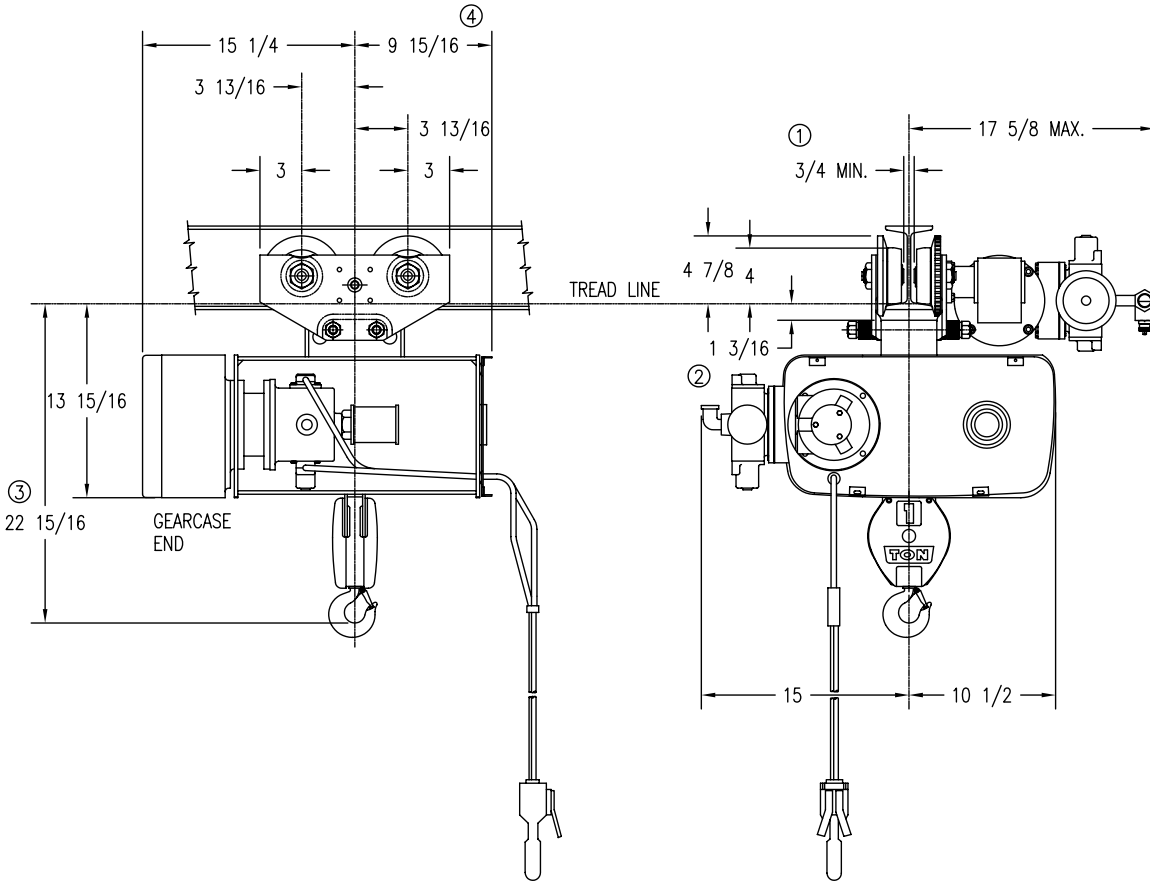
Double Reeved

1 Ton

AIR WIRE ROPE

Y80 - 800 Series

MOTOR DRIVEN TROLLEY



MINIMUM STANDARD RADIUS: 4'-0", FOR SMALLER RADIUS CONTACT FACTORY

CATALOG NUMBER	HOIST				TROLLEY		WEIGHT (LBS)	ESTIMATED WHEEL LOAD* (LBS)
	MAX LIFT (FT)	HOIST SPEED (FPM)	MOTOR SIZE	ROPE NO & DIA	SPEED (FPM)	MOTOR SIZE		
†80M01-034D33-A	34	33	A	4-3/16	75	A	430	701

Weights shown are for standard hoists listed. For approximate shipping weights, add 110 lbs. to the net weight given. Consult factory for weights of special hoists. Dimensions shown are in inches unless otherwise noted.

When used on smallest I-beam size, beam must be free of all obstructions, such as clips, suspension bolts, and nuts. Trolleys for wide flange beams refer to Optional Equipment.

Trolley beam size range – beam flange width 3" min., 5" max; beam depth 6" min. standard, 5-1/8"-7-1/4" with 1st extension, 7-1/2"-9-1/8" with 2nd extension. See Optional Price section for extension pricing.

① Occurs on smallest beam size only. On larger beams, it is increased by the difference in flange width.

② Clearance shown is between lug and wheel tread.

③ Dimension increases 3" when hoist is equipped with screw type limit switch.

④ Dimension increases 4" when hoist is equipped with screw type limit switch.

* Estimated wheel load per one (1) wheel. Includes live and dead load impacts.

† For a Y80 add a "Y" prefix.

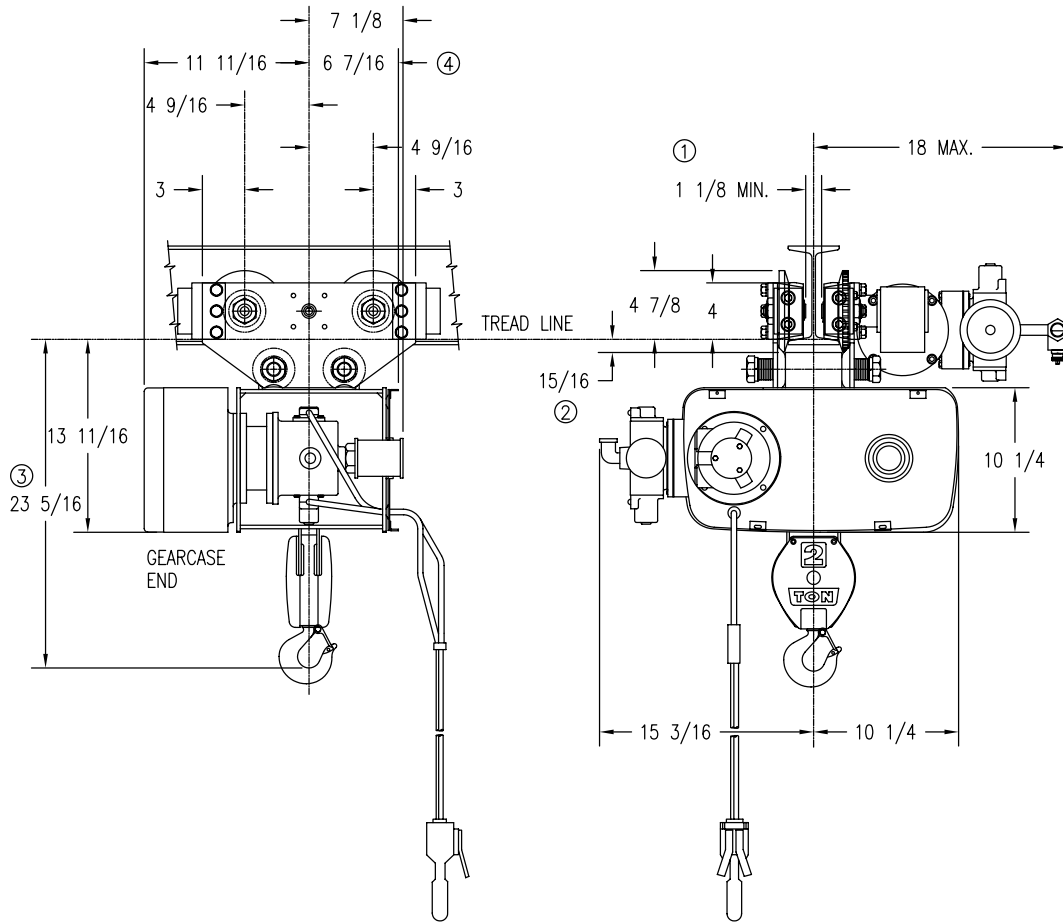
Double Reeved

2 Ton

AIR WIRE ROPE

Y80 - 800 Series

MOTOR DRIVEN TROLLEY



MINIMUM STANDARD RADIUS: 5'-0", FOR SMALLER RADIUS CONTACT FACTORY

CATALOG NUMBER	HOIST				TROLLEY		WEIGHT (LBS)	ESTIMATED WHEEL LOAD* (LBS)
	MAX LIFT (FT)	HOIST SPEED (FPM)	MOTOR SIZE	ROPE NO & DIA	SPEED (FPM)	MOTOR SIZE		
†80M02-014D16-A	14	16	A	4-1/4	75	A	400	1260

Weights shown are for standard hoists listed. For approximate shipping weights, add 110 lbs. to the net weight given. Consult factory for weights of special hoists. Dimensions shown are in inches unless otherwise noted.

When used on smallest I-beam size, beam must be free of all obstructions, such as clips, suspension bolts, and nuts. Trolleys for wide flange beams refer to Optional Equipment.

Trolley beam size range – beam flange width 3-3/8" min., 6" max; beam depth 7" min. standard, 6-1/4"-8-5/8" with 1st extension, 8-7/8"-11-1/4" with 2nd extension. See Optional Price section for extension pricing.

- ① Occurs on smallest beam size only. On larger beams, it is increased by the difference in flange width.
- ② Clearance shown is between lug and wheel tread.
- ③ Dimension increases 3" when hoist is equipped with screw type limit switch.
- ④ Dimension increases 4" when hoist is equipped with screw type limit switch.

* Estimated wheel load per one (1) wheel. Includes live and dead load impacts.

† For a Y80 add a "Y" prefix.

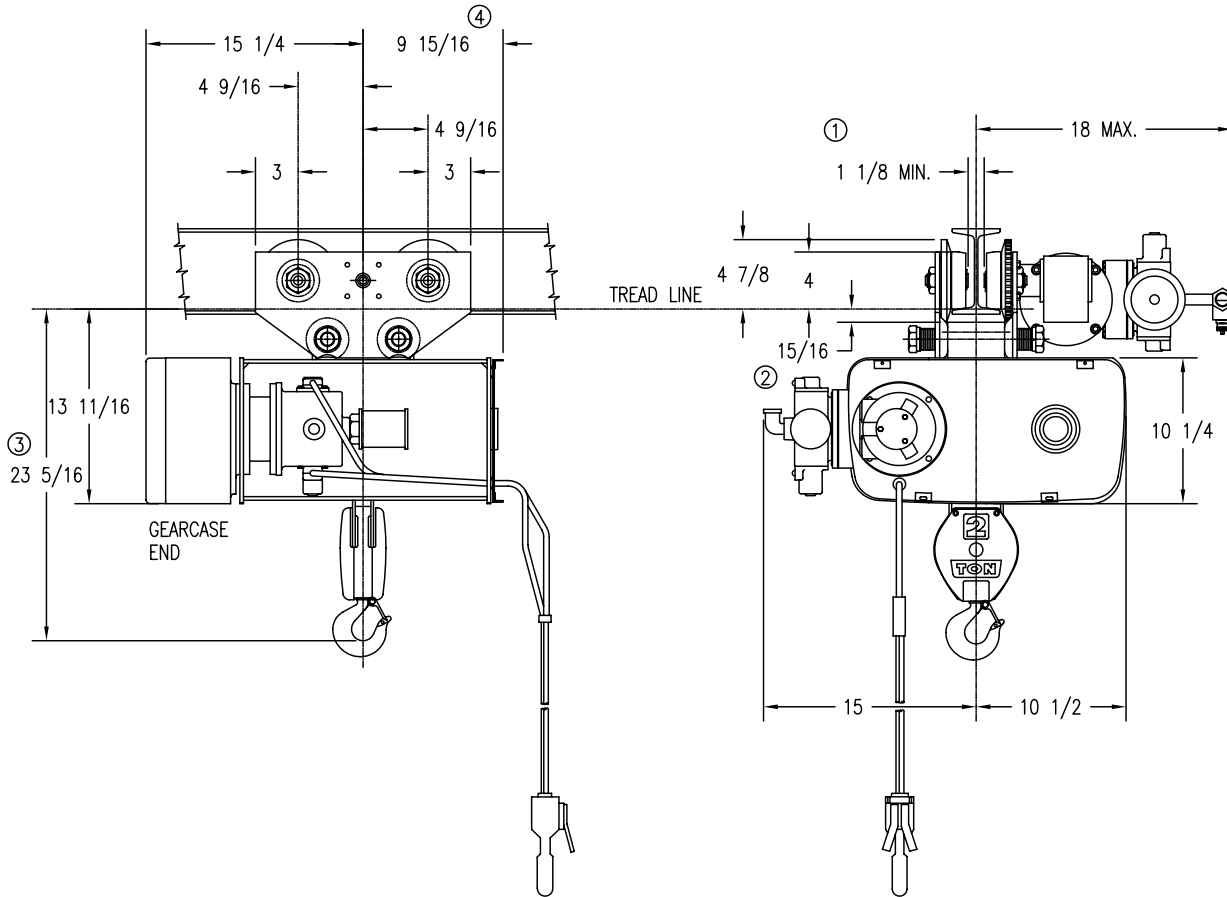
Double Reeved

2 Ton

AIR WIRE ROPE

Y80 - 800 Series

MOTOR DRIVEN TROLLEY



MINIMUM STANDARD RADIUS: 5'-0", FOR SMALLER RADIUS CONTACT FACTORY

CATALOG NUMBER	HOIST				TROLLEY		WEIGHT (LBS)	ESTIMATED WHEEL LOAD* (LBS)
	MAX LIFT (FT)	HOIST SPEED (FPM)	MOTOR SIZE	ROPE NO & DIA	SPEED (FPM)	MOTOR SIZE		
†80M02-025D16-A	25	16	A	4-1/4	75	A	435	1270

Weights shown are for standard hoists listed. For approximate shipping weights, add 110 lbs. to the net weight given. Consult factory for weights of special hoists. Dimensions shown are in inches unless otherwise noted.

When used on smallest I-beam size, beam must be free of all obstructions, such as clips, suspension bolts, and nuts. Trolleys for wide flange beams refer to Optional Equipment.

Trolley beam size range – beam flange width 3-3/8" min., 6" max; beam depth 7" min. standard, 6-1/4"-8-5/8" with 1st extension, 8-7/8"-11-1/4" with 2nd extension. See Optional Price section for extension pricing.

- ① Occurs on smallest beam size only. On larger beams, it is increased by the difference in flange width.
- ② Clearance shown is between lug and wheel tread.
- ③ Dimension increases 3" when hoist is equipped with screw type limit switch.
- ④ Dimension increases 4" when hoist is equipped with screw type limit switch.

* Estimated wheel load per one (1) wheel. Includes live and dead load impacts.

† For a Y80 add a "Y" prefix.



Yale[®] SHAW-BOX[®]

Phone (800) 888.0985 • Fax (716) 689.5644
www.columbusmckinnon.com

⚠ WARNING

- To Avoid Injury:**
- Do not exceed working load limit, load rating, or capacity
 - Do not use to lift people or loads over people
 - Read and follow all instructions