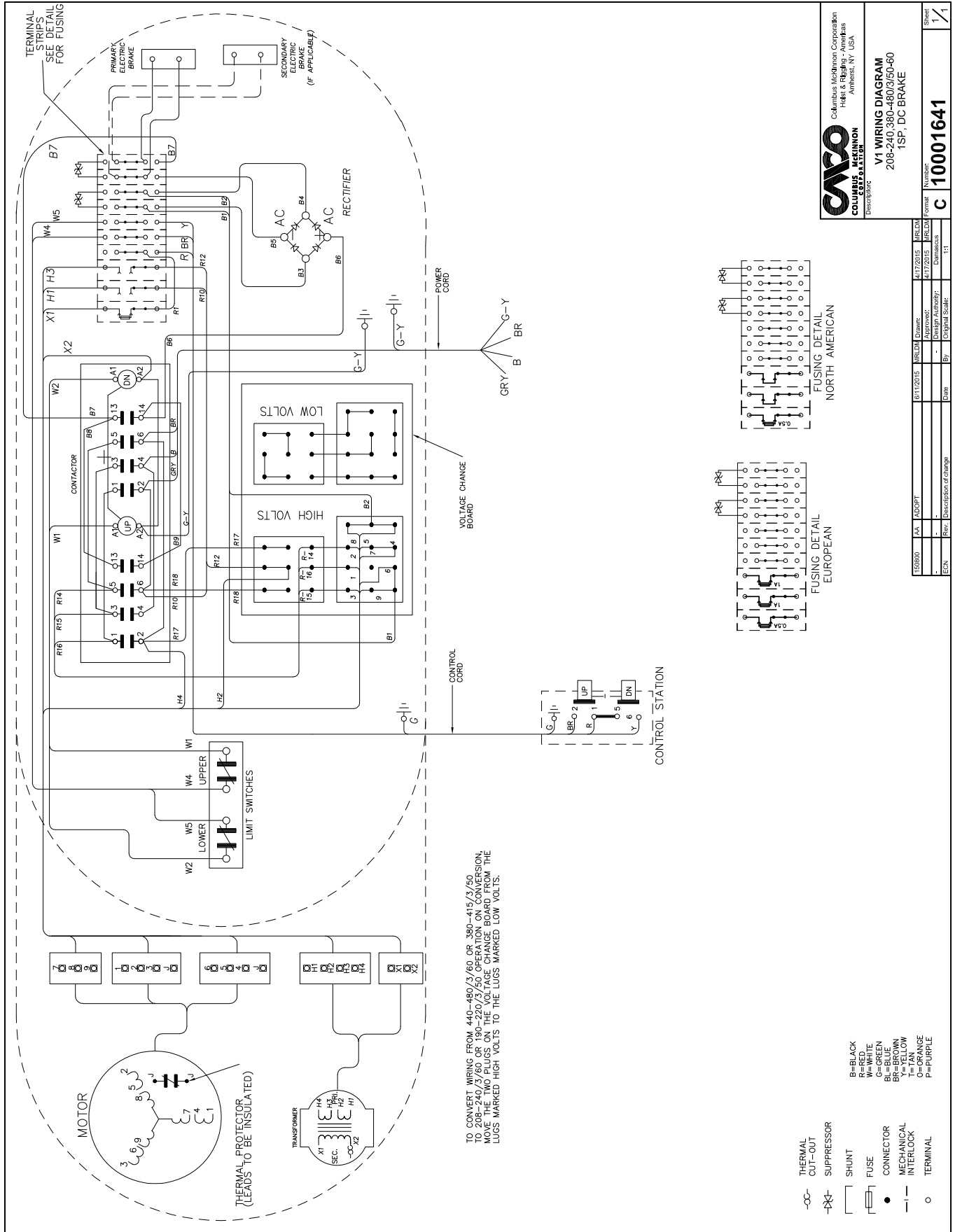


# FIGURE 20. TYPICAL WIRING DIAGRAMS

Wiring Diagrams shown are representative. Consult diagram in hoist or furnished with unit.



**CALPICO**  
 Columbus McKinnon Corporation  
 Hoist & Elevator - Americas  
 Amherst, NY, USA

**V1 WIRING DIAGRAM**  
 208-240-360-480/3/50-60  
 1SF, DC BRAKE

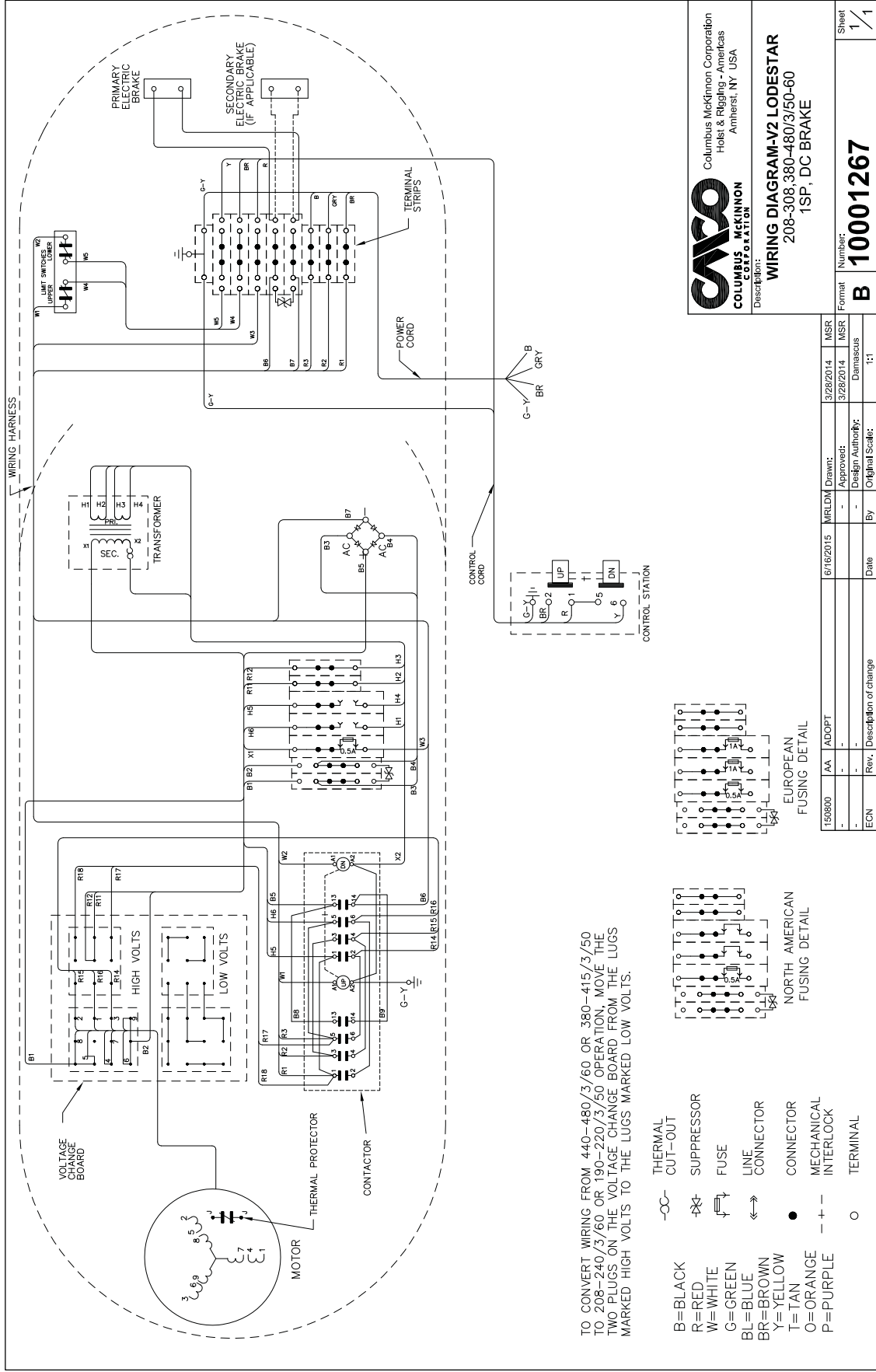
Number: **C 10001641**  
 Form: **C**  
 Sheet: **1/1**

ECN	Rev.	Date	By	Original Scale	Drawn	Checked	Appr.	MRLDN	MRLDN	MRLDN
180800	04	10/07/2015	BR		BR			4/17/2015	4/17/2015	4/17/2015

ECN: 10001641  
 Rev: 04  
 Date: 10/07/2015  
 By: BR  
 Original Scale:   
 Drawn: BR  
 Checked:   
 Appr.:   
 MRLDN: 4/17/2015  
 MRLDN: 4/17/2015  
 MRLDN: 4/17/2015

# FIGURE 21. TYPICAL WIRING DIAGRAMS

Wiring Diagrams shown are representative. Consult diagram in hoist or furnished with unit.



TO CONVERT WIRING FROM 440-480/3/60 OR 380-415/3/50 TO 208-240/3/60 OR 190-220/3/50 OPERATION, MOVE THE TWO PLUGS ON THE VOLTAGE CHANGE BOARD FROM THE LUGS MARKED HIGH VOLTS TO THE LUGS MARKED LOW VOLTS.

- B=BLACK
  - R=RED
  - W=WHITE
  - G=GREEN
  - BL=BLUE
  - BR=BROWN
  - Y=YELLOW
  - O=ORANGE
  - P=PURPLE
- THERMAL CUT-OUT
  - x— SUPPRESSOR
  - f— FUSE
  - <>— LINE CONNECTOR
  - CONNECTOR
  - +— MECHANICAL INTERLOCK
  - TERMINAL

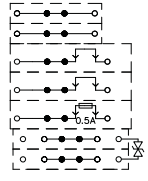
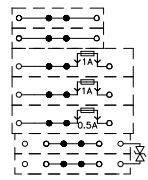
**CMS** Columbus McKinnon Corporation  
 Columbus McKinnon Corporation  
 Hoist & Rigging - Americas  
 Amherst, NY USA

**WIRING DIAGRAM-V2 LODESTAR**  
 208-308,380-480/3/50-60  
 1SP, DC BRAKE

Description: \_\_\_\_\_  
 Format: \_\_\_\_\_  
 Number: **10001267**  
 Sheet: **1/1**

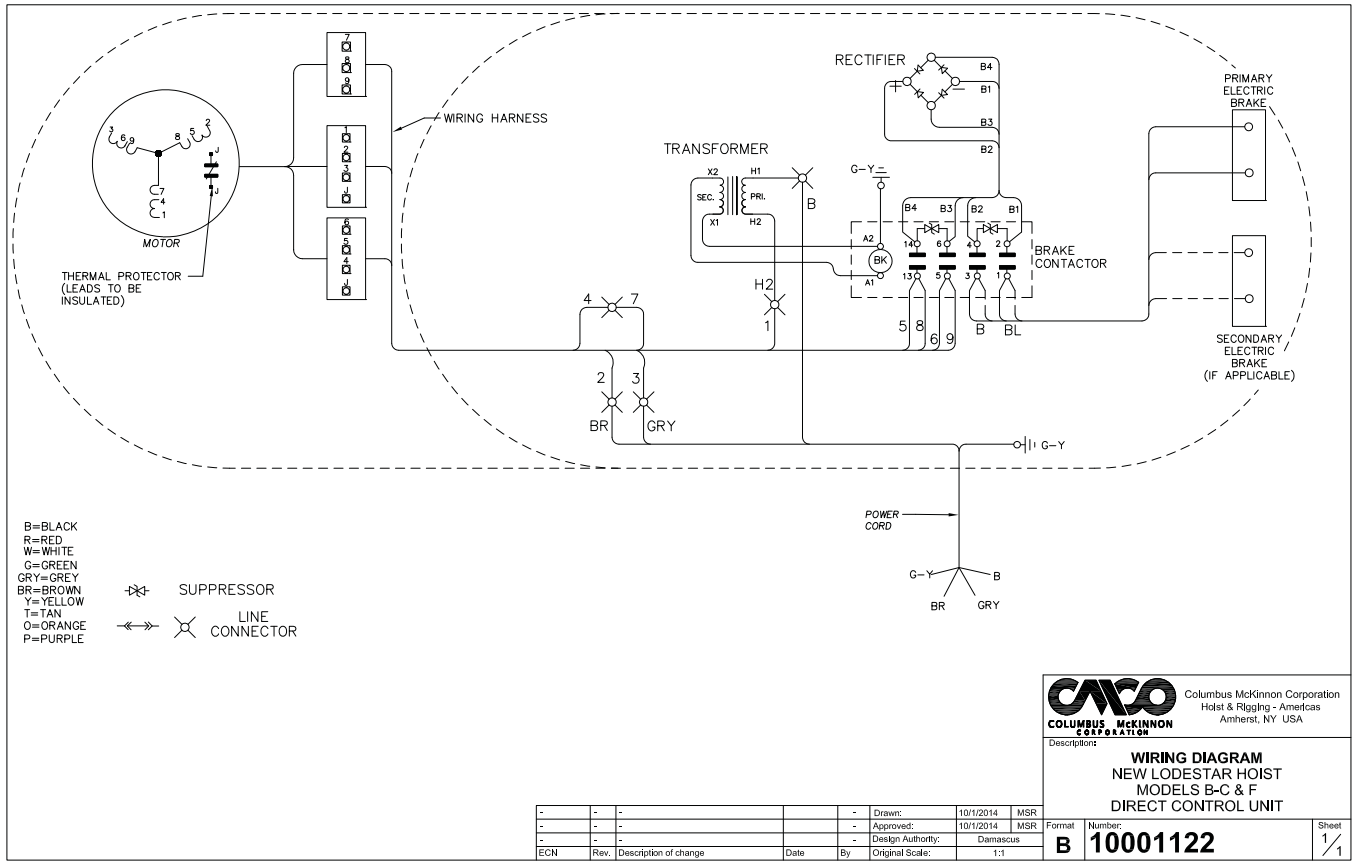
ECN	Rev.	Description of change	Date	By	Original Scale:
159600	AA	ADOPT	6/16/2015	MRLDM	MSR
-	-	-	-	-	MSR
-	-	-	-	-	Damascus
-	-	-	-	-	1:1

Approved: \_\_\_\_\_  
 Design Authority: \_\_\_\_\_  
 Date: \_\_\_\_\_



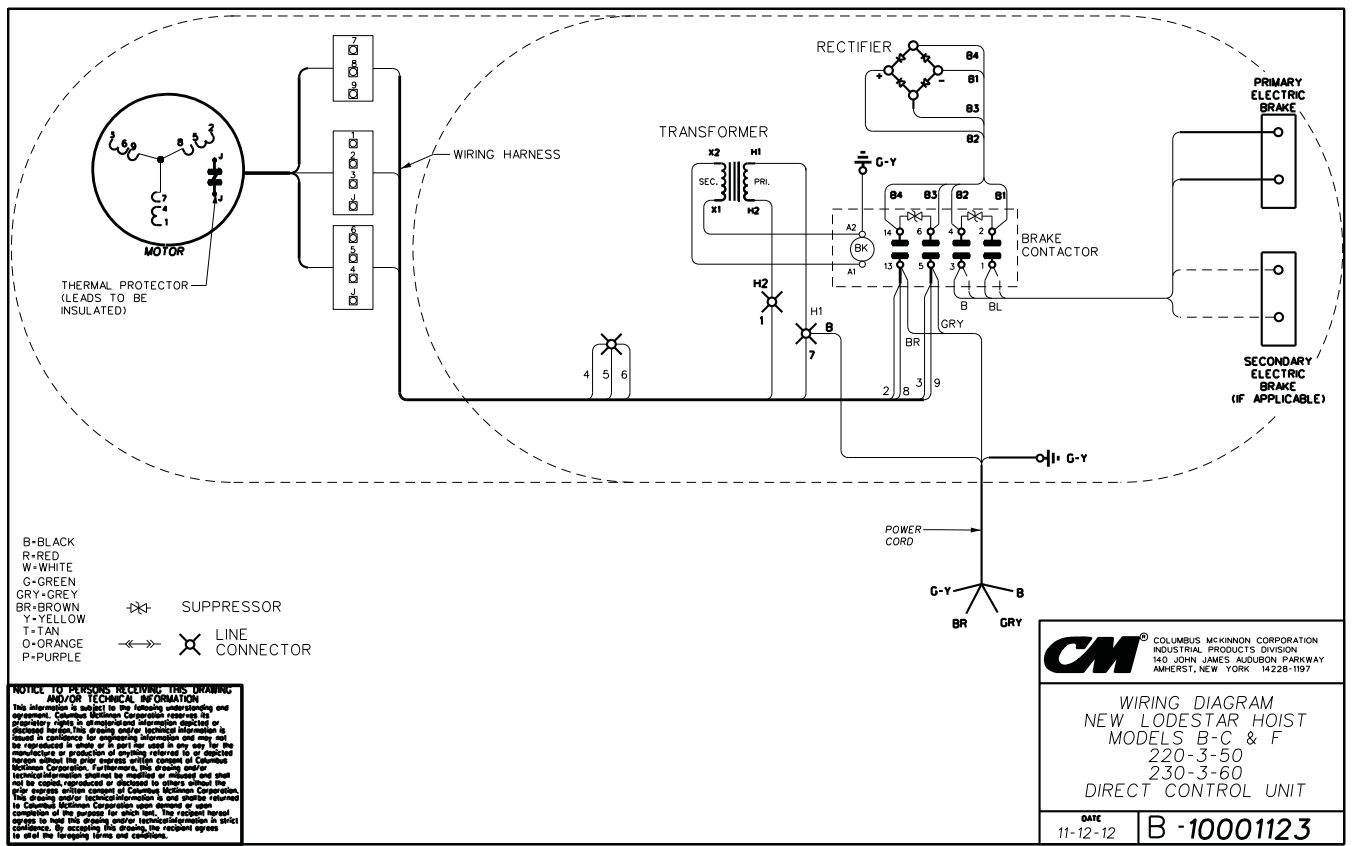
# FIGURE 22. TYPICAL WIRING DIAGRAMS (DIRECT CONTROL)

Wiring Diagrams shown are representative. Consult diagram in hoist or furnished with unit.



**C/M** COLUMBUS MCKINNON CORPORATION  
 Columbus McKinnon Corporation  
 Hoist & Rigging - Americas  
 Amherst, NY USA

Description: **WIRING DIAGRAM  
 NEW LODESTAR HOIST  
 MODELS B-C & F  
 DIRECT CONTROL UNIT**



**C/M** COLUMBUS MCKINNON CORPORATION  
 Columbus McKinnon Corporation  
 Industrial Products Division  
 140 JOHN JAMES AUDUBON PARKWAY  
 AMHERST, NEW YORK 14228-1197

Description: **WIRING DIAGRAM  
 NEW LODESTAR HOIST  
 MODELS B-C & F  
 220-3-50  
 230-3-60  
 DIRECT CONTROL UNIT**

**NOTICE TO PERSONS RECEIVING THIS DRAWING AND/OR TECHNICAL INFORMATION**  
 This information is subject to the following understanding and agreement. Columbus McKinnon Corporation reserves its proprietary rights in all information disclosed or described herein. This drawing and/or technical information is issued in confidence for engineering information and may not be reproduced in whole or in part for use in any way for the manufacture or production of anything referred to or depicted herein without the prior express written consent of Columbus McKinnon Corporation. Furthermore, this drawing and/or technical information shall not be disseminated, sold, loaned, or used to copy, reproduce or disclose to others without the prior express written consent of Columbus McKinnon Corporation. This drawing and/or technical information is one element returned to Columbus McKinnon Corporation upon receipt or upon completion of the project for which it is the recipient thereof and to hold this drawing and/or technical information in strict confidence. By accepting this drawing, the recipient agrees to effect the foregoing terms and conditions.

# FIGURE 23. TYPICAL WIRING DIAGRAMS (DIRECT CONTROL)

Wiring Diagrams shown are representative. Consult diagram in hoist or furnished with unit.

